

# 1. Package Content

Thank you for purchasing the PLANET RS232/422/485 over Fast Ethernet Media Converter – ICS-10X.

RS232/422/485 over Fast Ethernet Media Converter comes with one of the following models.

- ICS-100: Ethernet interface: RJ-45-100m
- ICS-101: Ethernet interface: ST, MM-2km
- ICS-102: Ethernet interface: SC, MM-2km
- ICS-102S15: Ethernet interface: SC, SM-15km

Upon open the box of the RS232/422/485 over Fast Ethernet Media Converter and carefully unpack it. The box should contain the following items:

- The RS232/422/485 over Fast Ethernet Media Converter x 1
- This Quick Installation Guide x 1
- User’s manual CD x 1
- External AC-DC Power Adapter x 1

If any item is found missing or damaged, please contact your local reseller for replacement.

# 2. Requirements

The RS232/422/485 over Fast Ethernet Media Converter provide remote Web interface for manage; the following equipments are necessary for further management.

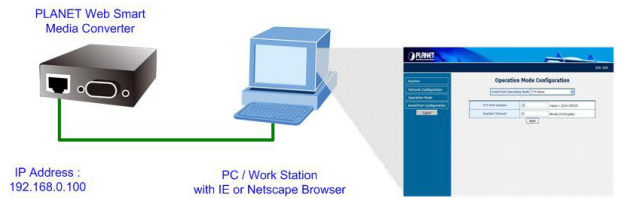
Network cables: Use standard network (UTP) cables with RJ45 connectors.

Subscriber PC installed with Ethernet NIC (Network Card)

The operate system of subscriber PC that running Windows 98/ME, NT4.0, 2000/XP, MAC OS9 or later, Linux, UNIX or other platform compatible with TCP/IP protocols.

# 3. Start Web Management

The PLANET RS232/422/485 over Fast Ethernet Media Converter provides a built-in browser interface. You can manage the Converter remotely by having a remote host with Web browser, such as Microsoft Internet Explorer, Netscape Navigator or Mozilla Firefox.



Make sure the manager PC must be set on the same IP subnet address, for example, the default IP address of the Web Smart Media Converter is **192.168.0.100** (the factory-default IP address), then the manager PC should be set at 192.168.0.x (where x is a number between 1 and 254, except 100), and the default subnet mask is 255.255.255.0.

Use Internet Explorer 6.0 or above Web browser, enter IP address **http://192.168.0.100** (the factory-default IP address) to access the Web interface.

Default IP Address: **192.168.0.100**  
Default Account: **admin**  
Default Password: **admin**

After entering the username and password (default user name and password is admin), the login screen appears as Figure 2-1 and the main screen appears as Figure 2-2.

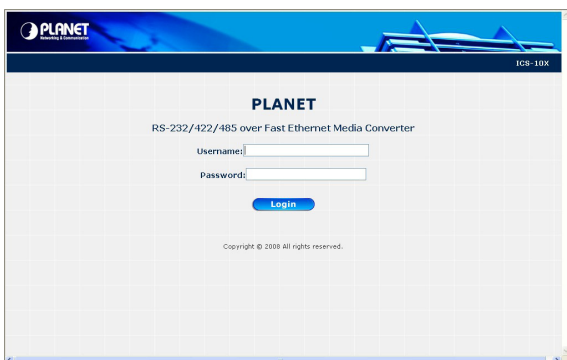



Figure 2-1: Web Login Screen of ICS-10X



Figure 2-2: Web Main Screen of ICS-10X

Now, you can use the Web management interface to continue the ICS-10x management. Please refer to the user manual for more.

 **Note** For security reason, please change and memorize the new password after this first setup.



## Serial ICS-10X RS-232/RS-422/RS-485 over Fast Ethernet Media Converter



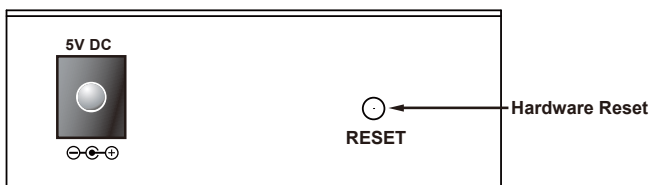
### Quick Installation Guide



### While IP Address lost or forgotten admin password –

Power on the device and hold the RESET button over 10 seconds. The device will go back to default setting:

IP address: **192.168.0.100**  
Username: **admin**  
Password: **admin**



### Customer Support

Please browse our online FAQ resource at the PLANET Web site first to check if it could solve you issue. For more support information, please contact PLANET converter support team.

PLANET online FAQ :

<http://www.planet.com.tw/en/support/faq.php?type=3>

Switch support team mail address :

[support\\_converter@planet.com.tw](mailto:support_converter@planet.com.tw)

Copyright © PLANET Technology Corp. 2009.

Contents subject to revision without prior notice.

PLANET is a registered trademark of PLANET Technology Corp. All other trademarks belong to their respective owners.