

10/100Mbps Direct Attached Print Server



Equipped with the Parallel printing interfaces, the FPS-1101 makes your printer available to be shared in most popular network environments.

With the embedded web server, the FPS-1101 is configurable through your network PC's Web Browser. Moreover, PLANET also provides a utility of management for Microsoft Windows systems. With various network printing methods included Windows Peer-to-Peer printing, NetWare and Windows server based Queues printing, LPR printing, Internet Printing Protocol (IPP) and AppleTalk for Macintosh, the FPS-1101 can be applied to any network easily.

With Auto-MDI/MDI-X function, users don't need to concern about the cable type while they connect to different LAN devices. It is capable to detect the signal and to change its transfer/receive order on the cable automatically. Moreover, the FPS-1101 LAN port can auto-sense and adjust the current network speed, thus it eliminates the requirements for manually switching.

KEY FEATURE

Supports for most popular NOS

- Supports Windows 98/2000/Me/NT/XP/Server 2003, Linux, Unix, Novell and Mac OS

Auto-Sensing

- Supports 10/100Mbps Auto-Nway, Automatically Negotiates optimal mode, 10/20Mbps, 100/200Mbps
- Ethernet 802.2, Ethernet 802.3, SNAP Auto-Detect

Auto-MDI/MDI-X

- Auto detects the connected cable type while it connects to different LAN devices. It is capable to detect the signal and to change its transfer/receive order on the cable automatically.

Compatible with popular network utility

- Unix, TCP/IP: LPD, TFTP
- Windows: LPR, PTP driver, IPP, SMB (NetBEUI)
- Apple: Ether Talk Chooser
- Novell: IPX/SPX, TCP/IP (5.x and later)

Easy Management

- Intuitive utility of management supports Windows 98/2000/Me/NT/XP and Server 2003
- Web-Base Management
- HP Web JetAdmin

SPECIFICATION

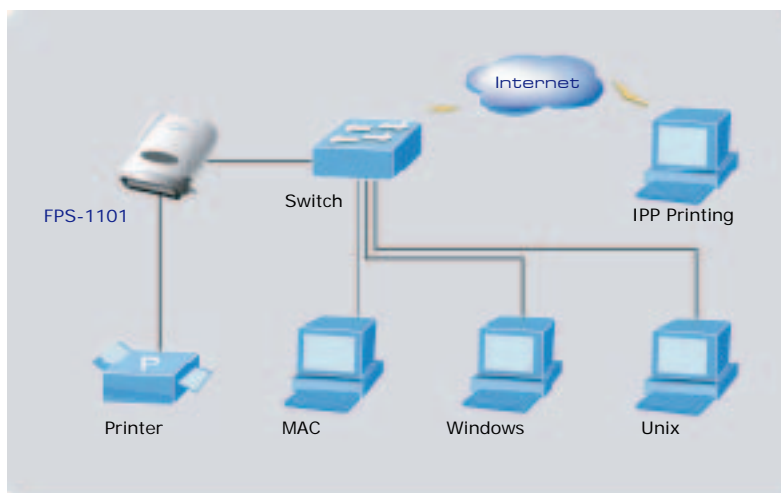
Product **10/100Mbps Direct Attached Print Server**

Model	FPS-1101
Media Interface	1-Port RJ-45 UTP
Standards	IEEE802.3, 10Base-T; IEEE802.3u, 100Base-TX
Cabling	Category 5/5e or above, 2-pair
Printer Ports	1 x 36 Pin
Protocols	TCP/IP, IPX/SPX, AppleTalk, Bi-Directional
NOS Support	Windows 95/98/Me/2000/NT/XP/Server 2003, Novell, Linux, Unix, and MAC OS PTP (Peer-to-Peer), Windows LPR printing, SMB, IPP (Internet Printing Protocol), LaserWriter
Printing methods	Chooser (AppleTalk)
Management Tools	PS-Admin (Windows Application), Web-based management (HTTP), HP Web JetAdmin
Dimension	59.5 (L) x 52 (W) x 22 (H) mm
Weight	52g
Power Supply	3.3V DC, 2A
Emission	FCC CE

APPLICATIONS

All users who work with different OS, such as Windows, Linux, Mac OS and Novell can use the printer via FPS-1101 at the same time.

Secondly, while the FPS-1101 is assigned with a legal IP address, local Internet users can use the attached printer through Internet with IPP printing functions.



ORDERING INFORMATION

FPS-1101	10/100 Mbps Direct Attached Print Server
----------	--