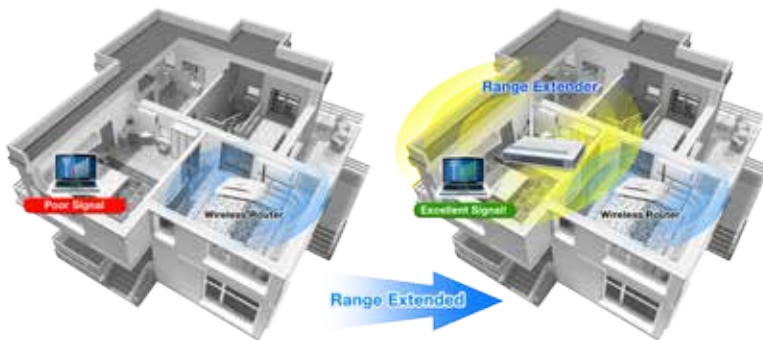


## 150Mbps 802.11n Wireless Range Extender



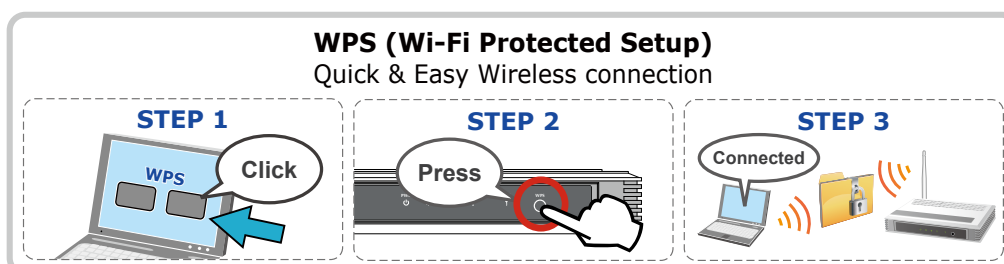
### High-speed Wireless Range Extender with Flexibly Detachable Antenna

Though the popularity of wireless networks in homes and businesses is growing, the wireless coverage capability is limited. To extend the coverage and eliminate the dead spot of wireless network in every place, PLANET provides a basic high-speed wireless range extender WNAP-1110 to solve this kind of situation. The WNAP-1110 is a 150Mbps 802.11n Wireless Range Extender backward compatible with 802.11b/g and its transmission data rate can be up to 150Mbps. The wireless range extender features radio in 1x1 (Tx / Rx) of intelligent antennas offering high performance and superior coverage range.



### One-touch Secure Wi-Fi Extension

To secure the wireless communication, the WNAP-1110 supports not only 64/128/152-bit WEP, but also up-to-date encryptions including WPA-PSK / WPA2-PSK with TKIP/AES, wireless MAC filtering and SSID broadcast control to consolidate the wireless network security and prevent unauthorized wireless connection. In order to simplify security settings for home and SOHO network, the WNAP-1110 supports Wi-Fi Protected Setup (WPS) with configuration in PBC and PIN type. Just push the WPS button or key in the PIN code and the secure connection between the WNAP-1110 and the access point can be built immediately. PLANET offers users a convenient and fast method to extend a secure wireless network.



### Standard Compliant Hardware Interface

- 150Mbps wireless transmission rate with MIMO technology
- IEEE 802.11n, 802.11b/g standard compliant
- 1 x 10/100Base-TX Port with Passive PoE supported

### Secure Network Connection

- Advanced security: 64/128/152-bit WEP, WPA / WPA2, WPA-PSK / WPA2-PSK (TKIP/AES encryption) and 802.1x Radius Authentication
- Easy setup secure wireless connection by one-touch WPS (Wi-Fi Protected Setup) button
- Supports MAC Address Filtering
- Supports Multiple SSIDs to allow users to access different networks through a single AP

### Wireless Network Range Extender

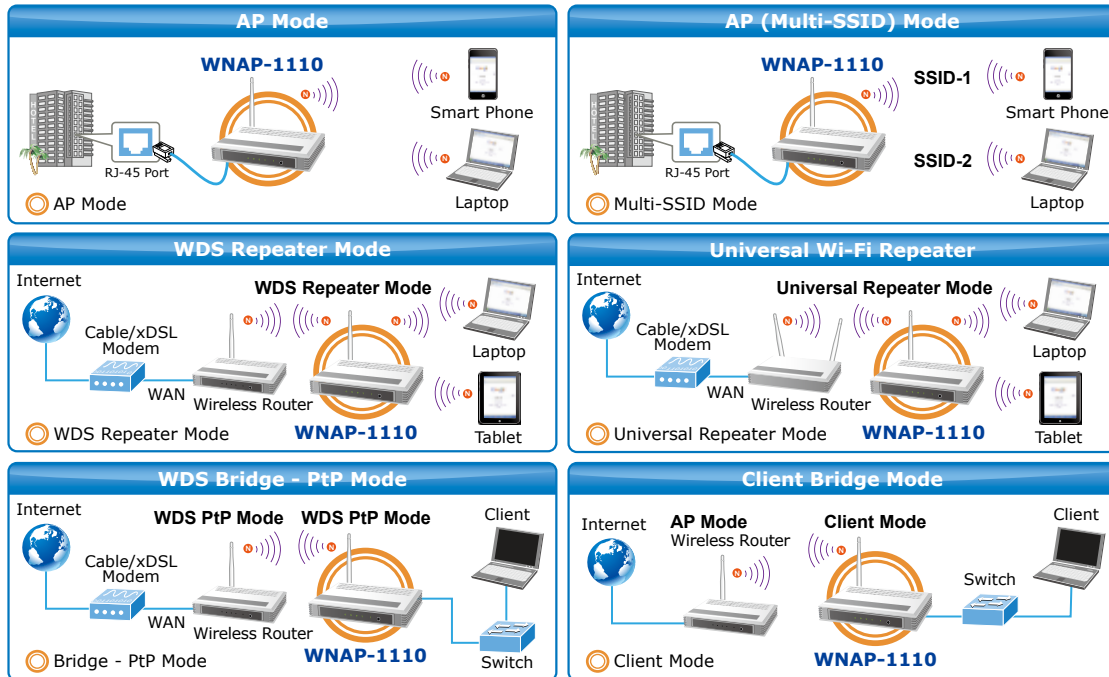
- Multiple Wireless Modes: AP, WDS, Repeater, Universal Repeater, Client
- Supports WMM (Wi-Fi Multimedia), Wireless QoS

### Supports Wireless Roaming

- Easy Installation & Management
- Flexible deployment with passive PoE/PD supported
- Web-based UI and Quick Setup Wizard for easy configuration
- SNMP-based management interface

*Multiple Operating and Wireless Modes*

Moreover, the WNAP-1110 is not only as a Range Extender, it also supports AP, Client, and WDS Bridge modes, through which it provides more flexibility for users when wireless network is established. Compared with general wireless range extender, the WNAP-1110 offers more powerful and flexible capability for wireless clients to access the Internet with management functions.



Being an access point, the WNAP-1110 supports the VLAN function to allow multiple SSID (Four sets of SSID) to access Internal VLAN topology. Moreover, its Wi-Fi Multimedia (WMM) capability provides enhanced QoS over wireless connection for better performance in multimedia transmission like on-line game and video streaming, which is classified as a top priority.

*Easy Installation and Management*

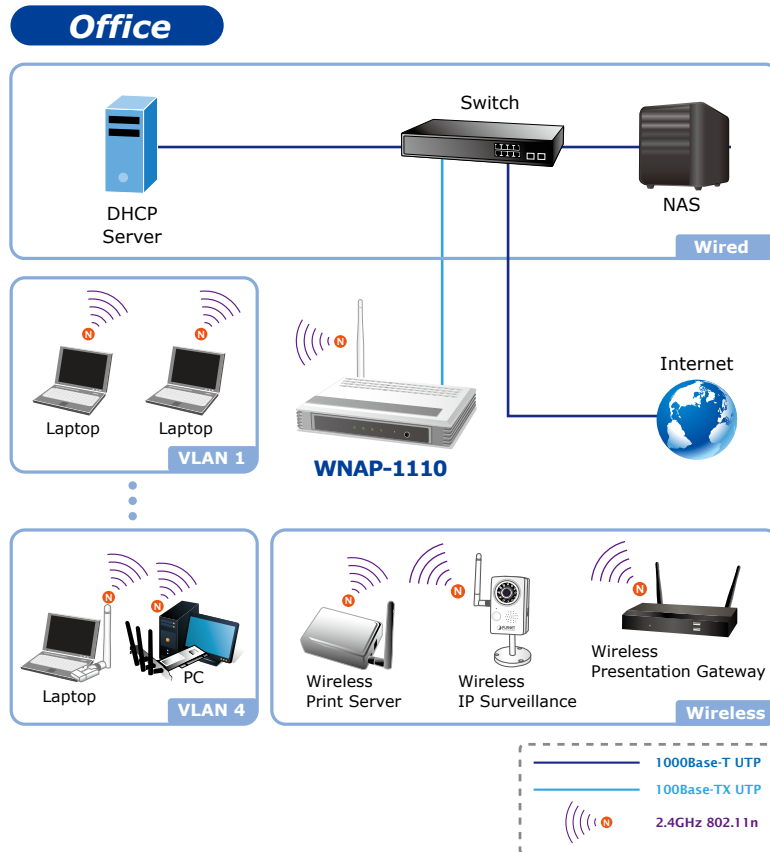
With user-friendly Web UI and step by step Quick Setup Wizard, the WNAP-1110 is easy to install, even for users who never experience setting up a wireless network. Furthermore, with SNMP-based management interface, the WNAP-1110 is convenient to be managed and configured remotely in a small business wireless network.

All in all, the WNAP-1110 provides a total wireless LAN solution for the small office, SOHO and home users. With the 802.11n wireless technology, it is easy to integrate the wireless devices with the existing wired network.

## Applications

### High-speed Wireless LAN with Secure Connection

The WNAP-1110 is an ideal solution for the residential and business users to enjoy the benefits of 150Mbps high-speed wireless networking. Locate the WNAP-1110 at the central point of an office or house and connect it to an ADSL Router, and then an in-house wireless LAN is established immediately. A laptop or a remote desktop installed with the 11n wireless adapters can be easily connected to the Internet via the WNAP-1110. In addition, the WPA / WPA2 mechanism, and the 802.1x authentication contained can effectively prevent eavesdropping by unauthorized users.



## Specifications

Model	WNAP-1110	
<b>Hardware Specifications</b>		
Interface	PoE LAN Port:	1 x 10/100Mbps Auto MDI/MDI-X RJ45 port Passive PoE/PD Port
PoE	Passive PoE (Up to 30 meters)	
Antenna	Detachable 4dBi antenna x 1	
Button	WPS Button	Press the WPS button on the front panel of the device for wireless connection
	Reset Button	Press about 5 seconds to reset the device to factory default
LED Indicators	PWR / SYS / LAN / WLAN / WPS LED	
Material	Plastic	
Dimensions (W x D x H)	174 x 110 x 23 mm	
Weight	250g	
Power Requirements	9V DC, 0.85A or Passive PoE	
Power Consumption	2W (max.)	
<b>Wireless Interface Specifications</b>		
Standard	Compliant with IEEE 802.11b/g/n	
Frequency Band	2.4~2.4835GHz	
Extended Frequency	DSSS	
Modulation Type	DBPSK, DQPSK, QPSK, CCK and OFDM (BPSK / QPSK / 16-QAM / 64-QAM)	

Data Transmission Rates	IEEE 802.11n: up to 150Mbps (Dynamic) IEEE 802.11g: 54/48/36/24/18/12/9/6Mbps (Dynamic) IEEE 802.11b: 11/5.5/2/1Mbps (Dynamic)
Frequency Band	America/ FCC: 2.414~2.462GHz (11 Channels) Europe/ ETSI: 2.412~2.472GHz (13 Channels) Japan/ TELEC: 2.412~2.484GHz (14 Channels)
Channel Width	20 or 40MHz
Transmission Distance	Indoor up to 100m Outdoor up to 300m (it is limited to the environment)
Max. RF Power (Intentional Radiator)	IEEE 802.11n: 15dBm IEEE 802.11g: 15dBm IEEE 802.11b: 18dBm
Receive Sensitivity	130M: -70dBm@10% PER 108M: -72dBm@10% PER 54M: -74dBm@10% PER 11M: -86dBm@8% PER 6M: -91dBm@10% PER 1M: -91dBm@8% PER

## Ordering Information

WNAP-1110	150Mbps 802.11n Wireless Range Extender
-----------	---

## Related Products

WNL-9501	802.11n Wireless PCI Express Adapter
WNL-U554A	802.11n Wireless USB Adapter
WNL-U555HA	High Power 802.11n Wireless Compact USB Adapter
WNL-U556M	300Mbps 802.11n Wireless Micro-size USB Adapter
WDL-U700	300Mbps Dual Band 802.11n Wireless USB Adapter
POE-165S	IEEE 802.3af/at Passive PoE Converter (12V/19V/24V)