

500Mbps Powerline Ethernet Bridge

PL-701

Quick Installation Guide

Table of Contents

1. Important Safety Instructions	3
2. Package Content.....	4
Package Details	4
LED Definition	5
Button Definition	5
Planning your Powerline Network	6
3. Connecting Powerline Ethernet Bridge.....	7
Hardware Installation	7
Utility Installation for Windows.....	8
Further Configuration	8

1. Important Safety Instructions

This product is intended for connection to the AC power line. The following pre-cautions should be taken when using this product:

- Please read all instructions before installing and operating this product.
- Please follow all warnings and instructions marked on the product.
- Do not operate this product near water.
- This product should never be placed near or over radiator, or heat register.
- This product relies on a building's electrical installation for short-circuit (over current) protection.
- Ensure that a fuse or circuit breaker is used on the phase conductors (all current-carrying conductors).
- Do not allow anything to rest on the product interconnect cords.
- Do not locate this product where people may walk on the cords.
- The power cord should be plugged directly into a specification AC wall outlet.
- Only a qualified technician should service this product. Opening or removing covers may result in exposure to dangerous voltage points or other risk.
- Unplug this product from the wall outlet and refer the product to qualified service personnel for the following conditions:
 1. When the interconnect cords are damaged or frayed.
 2. If liquid has been spilled onto the product.
 3. If the product has been exposed to rain or water.
 4. If the product does not operate normally when the operating instructions have been followed.
 5. If the product exhibits a distinct change in performance.

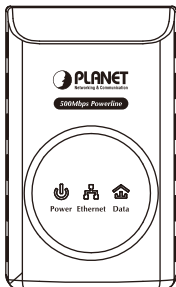
2. Package Content

PL-701

- PL-701 x 1 (**PL-701 x 2 for PL-701-KIT**)
- CD-ROM x 1 (User's Manual, Quick Guide and Utility)
- RJ-45 Cable x 1 (**RJ-45 Cable x 2 for PL-701-KIT**)
- Quick Installation Guide x 1

If any of the above items are missing or damaged, contact your local dealer for support.

Package Details



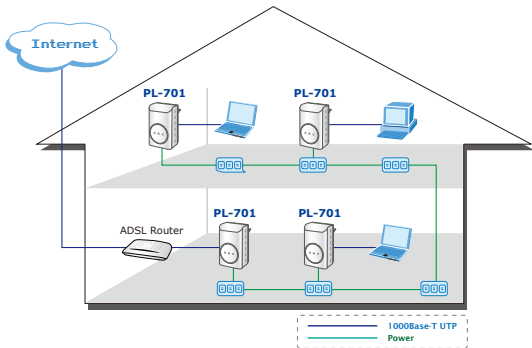
LED Definition

LED	Status	Description
Power	On	Steady on indicate the Powerline device connect to the power outlet
Ethernet	Blinking	Blinking indicates the data are transferring
	On	Steady on indicates the RJ-45 port has correctly connected to the network card of your PC or the Ethernet network
Data	Blinking	If the powerline device serving as a STATION (STA), the LED indicator will flash to indicated transmit or receive powerline activity.
	On	If the powerline device is serving as a CCO (Central Coordinator), the LED indicator will light steadily ON, even in the presence of powerline activity.

Button Definition

Button	Description	
Reset	Reset to factory default	
Security	Press security button more than 3 seconds.	Join a another HomePlugAV network
	Press security button more than 10 seconds	Set its security to random value

Planning your Powerline Network



With a **PL-701** and the other Powerline device installed, a network can be created over residential Powerline of your house. **PL-701** can be connected to Ethernet switch, hub, and broadband router or directly connected to PC. If connect directly to a PC, of course, the PC must be equipped with an Ethernet card.

All the Powerline devices on the network must use the same password to communicate each other. This password can be configured through the Powerline Configuration utility that can be found in the CD-ROM. The default password of PLANET Powerline devices is "**HomePlugAV**". Thus, all the PLANET Powerline devices can communicate each other without prior password configuration. Please refer to User's Manual on detail of installing and using Powerline Configuration utility.

3. Connecting Powerline Ethernet Bridge

Hardware Installation

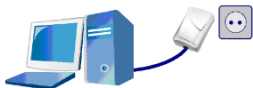
Setup 1. Connect one Powerline Ethernet bridge to your ADSL or Cable modem's Ethernet port.



Setup 2. Plug it into the nearest power socket.



Setup 3. Plug in the second Powerline Ethernet bridge next to your PC and connect the Ethernet ports.



Setup 4. Internet access from any power socket in your home.



Utility Installation for Windows

The installation procedure for the Powerline Configuration utility will vary depending on which operating system you are using on your computer. The following procedure is for installation under Windows XP. Installation on other operation system is similar.

1. Insert the CD into the CD-ROM drive to initiate the Autorun program. Once completed, a menu screen will appear.
2. Click on the **"Powerline Configuration Utility"** hyperlink in **PL-701** field to start the installation. If the menu screen is not shown, you can start the installation as follows.
 - Click on **Start Menu/ Run**.
 - Enter **"E:\Utility\setup.exe"** in the appeared box, where "E" is the letter of your CD-ROM drive.
 - Click on **"OK"** button.
3. The utility will be installed into your computer and a new icon called **"Power Packet Utility"** will appear on your desktop.



Note

This utility is only for Windows 2000, 2003, XP, Vista and Windows 7.

Further Configuration

If you want to configure more detail settings of **PL-701**, please refer to user's manual on the bundled CD.

If you have any difficulty on resolving the problem while installing or using the **PL-701**, please contact the dealer where you purchased this product or you can contact PLANET directly at the following email address: support@planet.com.tw