

# **Gigabit SSL VPN Security Router**

**SG-4800**

Quick Installation Guide

# Table of Contents

1. Package Contents .....	3
2. Hardware Installation .....	4
2.1 Safety Instruction .....	4
2.2 Front panel .....	4
2.3 LED & Button definition.....	5
2.4 Placement.....	5
2.5 Network Connection.....	6
3. Basic System Configuration .....	7
3.1 Web Login .....	7
3.2 Configuring the WAN .....	8
3.3 Remote Management .....	10
4. Further configuration.....	12

---

## **1. Package Contents**

Thank you for purchasing PLANET Gigabit Multi-Homing VPN Security Router, SG-4800, and this Quick Installation Guide will introduce how to finish the basic setting to connect the internet. Open the box of the VPN Security Router and carefully unpack it. The box should contain the following items:

- SG-4800 x 1
- Quick Installation Guide x 1
- User's Manual CD x 1
- Power Cord x 1
- Cat5 Cable x 1
- 19 inches Brackets x 2
- Bracket Screw x 8

If any of above items are damaged or missing, please contact your dealer immediately.

## 2. Hardware Installation

The followings are instructions for setting up PLANET SG-4800. Refer to the illustration and follow the simple steps below to quickly install your VPN Security Router.

### 2.1 Safety Instruction

The following is the safety instructions for VPN Security Router before installing.

- The maximum operating temperature of the router is 50°C. Care must be taken to allow sufficient air circulation.
- The connections and equipment that supply power to the router should be capable of operating safely with the maximum power requirements of the router. In the event of a power overload, the supply circuits and supply wiring should not become hazardous.
- The AC power cord must plug into the right supply voltage. Make sure that the supplied AC voltage is correct and stable. If the input AC voltage is over 10% lower than the standard may cause the router to malfunction.
- Generally, when installed after the final configuration, the product must comply with the applicable safety standards and regulatory requirements of the country in which it is installed. If necessary, consult for technical support.

### 2.2 Front panel



Figure 2-1 Front Panel of the SG-4800

- **Power Indicator:** Lights up when the power is on.
- **DIAG Indicator:** Glitters when system is on self-test after power on the device.
- **Ethernet Port can be set as a:**
  - **LAN Port:** The Security Router supports 8 LAN port.
  - **WAN Port:** The Security Router supports 4 WAN ports.
  - **DMZ Port:** The Security Router supports 1 DMZ port.

## 2.3 LED & Button definition

LED	Color	Status	Description
PWR	Green	Steady	Power On
	Off	Off	Power Off
DIAG	Amber	Steady On	System is crashed.
		Blinking	System is on self-test after power on the device.
		Off	System is ready.
WAN/DMZ LINK/ACT	Green	Steady On	Port has been connected & gets IP.
		Blinking	Transmit data.
		Off	Not get the IP address, even the port has been connected.
LAN LINK/ACT	Green	Steady On	LAN port has been connected.
		Blinking	Transmit data.
LAN/ WAN/DMZ Speed	Green	Steady On	Works on 1000Mbps.
	Amber	Steady On	Works on 100Mbps.
	Off	Off	Works on 10Mbps.

Button	Action	Description
Reset	Press for 5 Secs	Warm Start DIAG indicator: Amber LED flashing slowly.
	Press Over 10 Secs	Factory Default DIAG indicator: Amber LED flashing quickly.

## 2.4 Placement

Make sure the device is placed in a safe environment to avoid equipment failure.

- DO NOT place anything on top of the device. Excessive weight could damage it.
- DO NOT obstruct ventilation slots on each side of the router or expose it to direct sunlight or other heat source. Be sure that there is adequate air flow around the router.
- Place the router on a flat surface to avoid any damage.

## 2.5 Network Connection

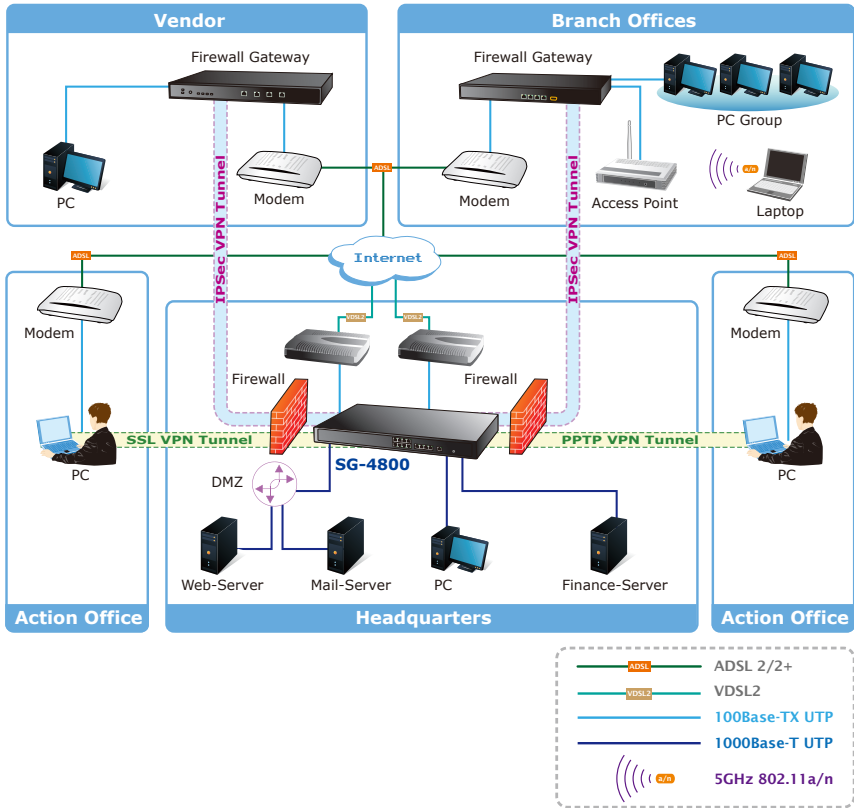


Figure 2-2 Topology of the SG-4800

## 3. Basic System Configuration

### 3.1 Web Login

- Step 1.** Connect a computer to a LAN port on the router. Your PC (DHCP client mode) will obtain an IP address automatically. (It is usually in the 192.168.1.x range.)
- Step 2.** Start a web browser. To use the user interface, you need a PC with Internet Explorer (version 6 and higher), Firefox, or Safari (for Mac).
- Step 3.** Enter the default IP address of the router: 192.168.1.1 into the URL address box.
- Step 4.** Enter the default user name admin and the default password admin. Then click Login to enter Web-based user interface.

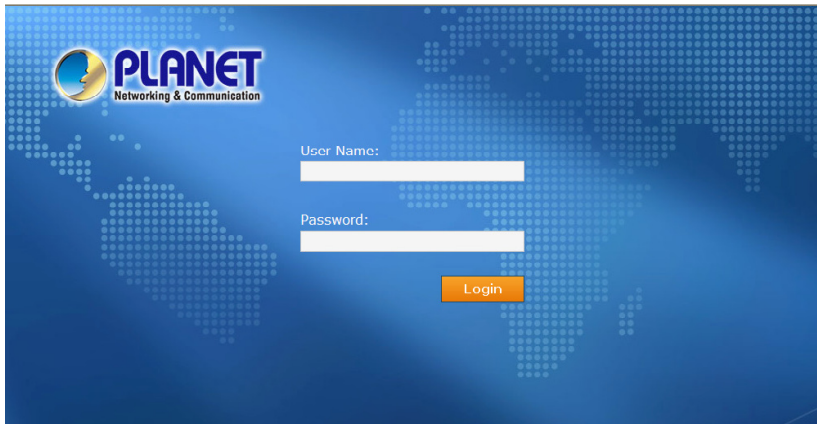


Figure 3-1 Login page of the SG-4800

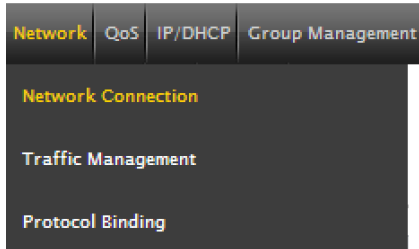
Default LAN IP: **192.168.1.1**

Default Name: **admin**

Default Password: **admin**

## 3.2 Configuring the WAN

**Step 1.** Go to **Network** → **Network** Connection to find **WAN Setting**.



**Figure 3-2** Network connection button

WAN Setting		
Interface	Connection Type	Config.
WAN 1	Obtain an IP automatically	<a href="#">Edit</a>
WAN 2	Obtain an IP automatically	<a href="#">Edit</a>
WAN 3	Obtain an IP automatically	<a href="#">Edit</a>
WAN 4	Obtain an IP automatically	<a href="#">Edit</a>

**Figure 3-3** Multi-WAN interface setting page



**Step 2.** Click Edit to enter WAN configuration page.

Interface: WAN 1

WAN Connection Type: Obtain an IP automatically

Use the Following DNS Server Addresses

DNS Server(Required): 0 . 0 . 0 . 0

DNS Server(Optional): 0 . 0 . 0 . 0

Shared-Circuit WAN environment:  Yes  NO (Filter broadcast packets from WAN)

MTU:  Auto  Manual 1500 bytes

Enabled Line-Dropped Scheduling

Line-Dropped Period: from 0 : 0 to 1 : 0 (24-Hour Format)

Line-Dropped Scheduling: 5 minutes ahead line-dropped to start new session transferring

Backup Interface: disable

Back Apply Cancel

**Figure 3-4** WAN configuration page

There are six types of WAN connection. They are **Obtain an IP automatically**, **Static IP**, **PPPoE** (Point-to-Point Protocol over Ethernet), **PPTP** (Point-to-Point Tunneling Protocol), **Transparent Bridge** or **Router Plus NAT Mode**. Users can choose according to their actual network structure. You can find detail setting process in the user manual.

Static IP

Obtain an IP automatically

Static IP

PPPoE

PPTP

Transparent Bridge

Router Plus NAT Mode

**Figure 3-5** WAN connection type selection item

### 3.3 Remote Management

The function can enable users to manage the security router at remote sites and to allow technical person to assist you in solving network problem.

**Step 1.** Go to **Firewall** → **General Policy**.

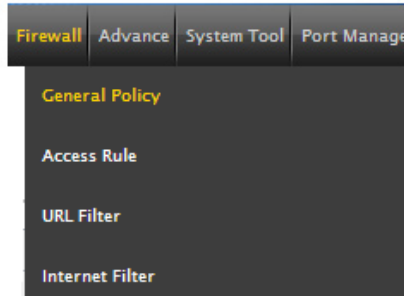
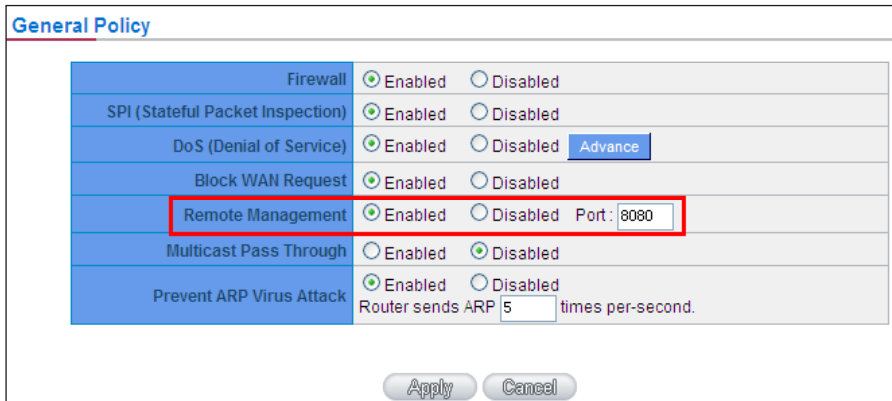


Figure 3-6 The firewall setting button

A screenshot of the 'General Policy' configuration page. The page has a title 'General Policy' in blue. Below the title is a table of settings. The 'Remote Management' row is highlighted with a red border. The 'Port' field in this row contains the value '8080'. At the bottom of the page are two buttons: 'Apply' and 'Cancel'.

General Policy	
Firewall	<input checked="" type="radio"/> Enabled <input type="radio"/> Disabled
SPI (Stateful Packet Inspection)	<input checked="" type="radio"/> Enabled <input type="radio"/> Disabled
DoS (Denial of Service)	<input checked="" type="radio"/> Enabled <input type="radio"/> Disabled <a href="#">Advance</a>
Block WAN Request	<input checked="" type="radio"/> Enabled <input type="radio"/> Disabled
Remote Management	<input checked="" type="radio"/> Enabled <input type="radio"/> Disabled Port: 8080
Multicast Pass Through	<input type="radio"/> Enabled <input checked="" type="radio"/> Disabled
Prevent ARP Virus Attack	<input checked="" type="radio"/> Enabled <input type="radio"/> Disabled Router sends ARP 5 times per-second.

Figure 3-7 General Policy setting page

**Step 2.** Click **Enable** to active Remote Management. And then enter the control port you want to use. The default value is **8080**.

**Step 3.** Click **Apply** to save the configuration. And you can type the **http://WAN IP address: 8080** to access the router from the remote side.

**Step 4.** To verify the IP addresses of your computer and the security router. Click **Start** form Windows → **Run**. Type the **cmd** to open the command window, then type **ipconfig** for getting default gateway address. In the below case, the default gateway is 192.168.1.1 and the user's PC is 192.168.1.100.

```
Ethernet adapter Local Area Connection:

    Connection-specific DNS Suffix . : smb.com
    IP Address . . . . . : 192.168.1.100
    Subnet Mask . . . . . : 255.255.255.0
    IP Address . . . . . : fe80::222:19ff:fe06:b981%9
    Default Gateway . . . . . : 192.168.1.1
```

**Figure 3-8** Check the IP address for the PC and router



If the default gateway is **0.0.0.0** or **169.x.x.x**, it means the router doesn't obtain an IP address correctly. Please check your adapter installation, security setting and the network connection first.

---

## **4. Further configuration**

Thank you for purchase PLANET products. The above steps introduce simple configuration for SG-4800. For further configuration, please refer to the user's manual on the CD. If you have other questions, please contact the local dealer or distributor where you purchased this product.

You also can browse our online FAQ resource at the PLANET Web site first to check if it could solve you issue. If you need more support information, please contact PLANET switch support team.

PLANET online FAQ :

<http://www.planet.com.tw/en/support/faq.php?type=1>

Broadband support team mail address :

[support@planet.com.tw](mailto:support@planet.com.tw)

Copyright © PLANET Technology Corp. 2012.

Contents subject to revision without prior notice.

PLANET is a registered trademark of PLANET Technology Corp. All other trademarks belong to their respective owners.