

## **3 Mega-Pixel Vari-Focal IR / Fisheye IP Camera**

**ICA-3350V / ICA-5350V / ICA-8350**

Quick Installation Guide

# Table of Contents

Chapter 1. Introduction .....	3
1.1 Before Installation .....	3
1.2 System Requirements .....	3
Chapter 2. Physical Description and Installation .....	4
2.1 ICA-3350V 3 Mega-Pixel Vari-Focal Bullet IR IP Camera .....	4
2.1.1 Package Content .....	4
2.1.2 Physical Details .....	4
2.1.3 Installation .....	6
2.2 ICA-5350V 3 Mega-Pixel Vandal Proof IR IP Camera .....	7
2.2.1 Package Content .....	7
2.2.2 Physical Details .....	7
2.2.3 Installation .....	9
2.3 ICA-8350 3 Mega-Pixel Vandal Proof Fisheye IP Camera .....	10
2.3.1 Package Content .....	10
2.3.2 Physical Details .....	10
2.3.3 Installation .....	12
Chapter 3. Camera Windows Utility .....	13
Further Information .....	16

---

## Chapter 1. Introduction

Thank you for purchasing the PLANET 3 Mega-Pixel Vari-Focal IR / Fisheye IP Camera. It is versatile and high image resolution of surveillance application for day and night. The PLANET IP Camera support Multi-Profile function can stand for simultaneously video streams. These Network Cameras can generate H.264, MPEG-4 and M-JPEG streaming simultaneously to different clients. Moreover, the resolution can be different from one client to another. This state-of-art design is considerable to fit in various network environments.

### 1.1 Before Installation

Before installation, please be sure to read this quick installation guide and user's manual (CD) carefully to complete machine installation. This guide shows how to quick set up these cameras, unless model name specified terms "IP Camera" will be used for these three models.

### 1.2 System Requirements

CPU	Intel Dual Core 2.4GHz or higher
RAM	2GB (above Recommended)
Video RAM	256MB (above Recommended)
Display Resolution	1280x1024 24bits or above
Operating System	Windows XP / Vista / Win7
DirectX	10 or above
Network	Wired Ethernet 100Base-TX

## Chapter 2. Physical Description and Installation

### 2.1 ICA-3350V 3 Mega-Pixel Vari-Focal Bullet IR IP Camera

#### 2.1.1 Package Content

ICA-3350V x 1

Power Adapter x 1

Accessory Kit x 1

User's Manual CD x 1

Quick Installation Guide x 1

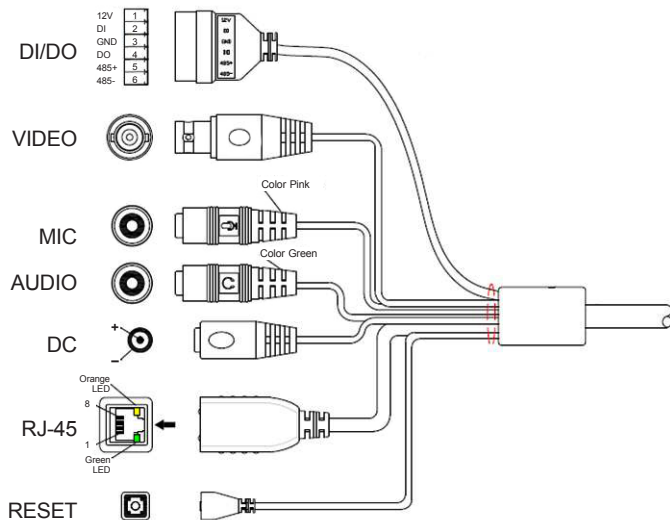



Note

If any of the above items are missing, please contact your dealer immediately.

#### 2.1.2 Physical Details

ICA-3350V Connector



Interface	Description																					
<b>RJ45 LAN socket</b>	<p>Connects to your local area network by Ethernet cable.</p> <p>LAN LED (green color) This LED will be flashing while network accessing via Ethernet.</p> <p>Power LED (orange color) This LED is used to indicate whether DC power is on or not.</p>																					
<b>DC-in Jack</b>	<p>DC power input, connect to AC power adapter.</p> <div data-bbox="281 408 378 536" style="border: 1px solid black; padding: 5px; display: inline-block;">   <b>Note</b> </div> <p>To ensure maximum compatibility, use only the power adapter that came with your product. Otherwise, the product may be damaged.</p>																					
<b>RS-485 &amp; Digital I/O</b>	<p>RS-485: Connect to a local keyboard controller. DI/ DO: Connect to sensor in and alarm out devices. Cable for I/O connectors:</p> <table border="1" data-bbox="281 663 992 930"> <thead> <tr> <th data-bbox="281 663 432 700">Name</th> <th data-bbox="432 663 591 700">Number</th> <th data-bbox="591 663 992 700">Function</th> </tr> </thead> <tbody> <tr> <td data-bbox="281 700 432 738">12VDC</td> <td data-bbox="432 700 591 738">1</td> <td data-bbox="591 700 992 738">DC 12V (50mA maximum)</td> </tr> <tr> <td data-bbox="281 738 432 777">DI</td> <td data-bbox="432 738 591 777">2</td> <td data-bbox="591 738 992 777">Digital signal input</td> </tr> <tr> <td data-bbox="281 777 432 815">GND</td> <td data-bbox="432 777 591 815">3</td> <td data-bbox="591 777 992 815">GND</td> </tr> <tr> <td data-bbox="281 815 432 853">DO</td> <td data-bbox="432 815 591 853">4</td> <td data-bbox="591 815 992 853">Digital signal output</td> </tr> <tr> <td data-bbox="281 853 432 892">485+</td> <td data-bbox="432 853 591 892">5</td> <td data-bbox="591 853 992 892">RS485 data +</td> </tr> <tr> <td data-bbox="281 892 432 930">485-</td> <td data-bbox="432 892 591 930">6</td> <td data-bbox="591 892 992 930">RS485 data -</td> </tr> </tbody> </table>	Name	Number	Function	12VDC	1	DC 12V (50mA maximum)	DI	2	Digital signal input	GND	3	GND	DO	4	Digital signal output	485+	5	RS485 data +	485-	6	RS485 data -
Name	Number	Function																				
12VDC	1	DC 12V (50mA maximum)																				
DI	2	Digital signal input																				
GND	3	GND																				
DO	4	Digital signal output																				
485+	5	RS485 data +																				
485-	6	RS485 data -																				
<b>MIC in (Audio in)</b>	Connect a microphone to the network camera.																					
<b>Audio out</b>	Connect a loud speaker to the network camera. This function is for voice alerting and two-way audio.																					
<b>Video out (BNC connector)</b>	<p>The Network Camera also provides composite video output. The video output function is only for easy installation to check view angle and focus. The output is not a Mega-Pixel resolution. Furthermore, only "720P Mode" supports this function. "2 Mega Mode" does not support it. Please refer to Setting \ Video \ Common chapter.</p>																					

## Reset

This button is used to restore the all factory default settings. Sometimes restarting the device will make the system back to a normal state. However, if the system still got problems after restart, user can restore the factory default settings and install it again.

Restore the device:

1. While the Camera is ready and then press the button down continuously.
2. Hold the button at least 5 seconds and release it. Then the device has been restored to default settings and reboot again.



Note

Restoring the factory default setting will lose the all previous settings included IP address forever. User needs to run the IPWizard II program to search the device and configure it to let the device work properly again.

### 2.1.3 Installation

1. Fix IR camera to desired location with wall mount fixture.
2. Plug-in Ethernet Cable into RJ-45 connector.

Connect an Ethernet cable to the LAN socket located on the Network Camera's back panel and attach it to the network.

3. Connect RS485 D+ and D- (if you need to control PT scanner).
4. Connect the attached power adapters to camera and heater (option/by model) and plug-in these adapters into power outlet.
5. Done.

## 2.2 ICA-5350V 3 Mega-Pixel Vandal Proof IR IP Camera

### 2.2.1 Package Content

ICA-5350V x 1

Power Adapter x 1

Accessory Kit x 1

User's Manual CD x 1

Quick Installation Guide x 1

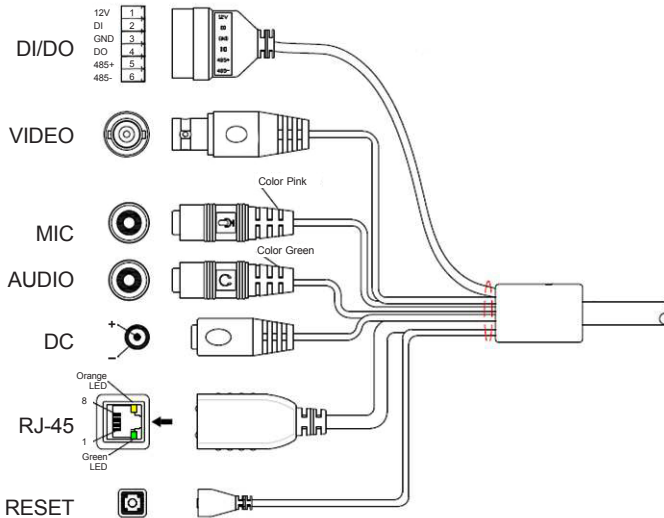



Note

If any of the above items are missing, please contact your dealer immediately.

### 2.2.2 Physical Details

ICA-5350V Connector



Interface	Description																					
<b>RJ45 LAN socket</b>	Connects to your local area network by Ethernet cable. LAN LED (green color) This LED will be flashing while network accessing via Ethernet. Power LED (orange color) This LED is used to indicate whether DC power is on or not.																					
<b>DC-in Jack</b>	DC power input, connect to AC power adapter. <div data-bbox="281 400 378 528" style="border: 1px solid black; padding: 5px; display: inline-block;">   <b>Note</b> </div> To ensure maximum compatibility, use only the power adapter that came with your product. Otherwise, the product may be damaged.																					
<b>RS-485 &amp; Digital I/O</b>	RS-485: Connect to a local keyboard controller. DI/ DO: Connect to sensor in and alarm out devices. Cable for I/O connectors: <table border="1" data-bbox="281 651 992 919" style="width: 100%; border-collapse: collapse; margin-top: 10px;"> <thead> <tr> <th data-bbox="281 651 432 689">Name</th> <th data-bbox="432 651 591 689">Number</th> <th data-bbox="591 651 992 689">Function</th> </tr> </thead> <tbody> <tr> <td data-bbox="281 689 432 727">12VDC</td> <td data-bbox="432 689 591 727">1</td> <td data-bbox="591 689 992 727">DC 12V (50mA maximum)</td> </tr> <tr> <td data-bbox="281 727 432 766">DI</td> <td data-bbox="432 727 591 766">2</td> <td data-bbox="591 727 992 766">Digital signal input</td> </tr> <tr> <td data-bbox="281 766 432 804">GND</td> <td data-bbox="432 766 591 804">3</td> <td data-bbox="591 766 992 804">GND</td> </tr> <tr> <td data-bbox="281 804 432 842">DO</td> <td data-bbox="432 804 591 842">4</td> <td data-bbox="591 804 992 842">Digital signal output</td> </tr> <tr> <td data-bbox="281 842 432 880">485+</td> <td data-bbox="432 842 591 880">5</td> <td data-bbox="591 842 992 880">RS485 data +</td> </tr> <tr> <td data-bbox="281 880 432 919">485-</td> <td data-bbox="432 880 591 919">6</td> <td data-bbox="591 880 992 919">RS485 data -</td> </tr> </tbody> </table>	Name	Number	Function	12VDC	1	DC 12V (50mA maximum)	DI	2	Digital signal input	GND	3	GND	DO	4	Digital signal output	485+	5	RS485 data +	485-	6	RS485 data -
Name	Number	Function																				
12VDC	1	DC 12V (50mA maximum)																				
DI	2	Digital signal input																				
GND	3	GND																				
DO	4	Digital signal output																				
485+	5	RS485 data +																				
485-	6	RS485 data -																				
<b>MIC in (Audio in)</b>	Connect a microphone to the network camera.																					
<b>Audio out</b>	Connect a loud speaker to the network camera. This function is for voice alerting and two-way audio.																					
<b>Video out (BNC connector)</b>	The Network Camera also provides composite video output. The video output function is only for easy installation to check view angle and focus. The output is not a Mega-Pixel resolution. Furthermore, only "720P Mode" supports this function. "2 Mega Mode" does not support it. Please refer to Setting \ Video \ Common chapter.																					



## Reset

This button is used to restore the all factory default settings. Sometimes restarting the device will make the system back to a normal state. However, if the system still got problems after restart, user can restore the factory default settings and install it again.

Restore the device:

1. While the Camera is ready and then press the button down continuously.
2. Hold the button at least 5 seconds and release it. Then the device has been restored to default settings and reboot again.



Note

Restoring the factory default setting will lose the all previous settings included IP address forever. User needs to run the IPWizard II program to search the device and configure it to let the device work properly again.

### 2.2.3 Installation

1. Fix IR camera to desired location with wall mount fixture.
2. Plug-in Ethernet Cable into RJ-45 connector.

Connect an Ethernet cable to the LAN socket located on the Network Camera's back panel and attach it to the network.

3. Connect RS485 D+ and D- (if you need to control PT scanner).
4. Connect the attached power adapters to camera and heater (option/by model) and plug-in these adapters into power outlet.
5. Done.

## 2.3 ICA-8350 3 Mega-Pixel Vandal Proof Fisheye IP Camera

### 2.3.1 Package Content

ICA-8350 x 1

Power Adapter x 1

Accessory Kit x 1

User's Manual CD x 1

Quick Installation Guide x 1

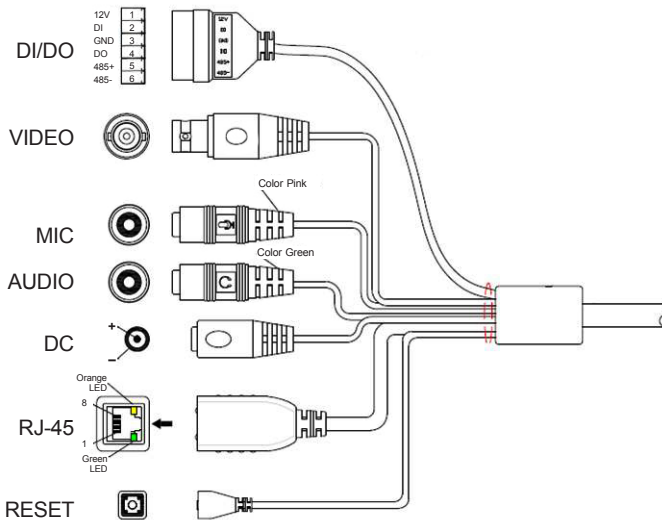



Note

If any of the above items are missing, please contact your dealer immediately.

### 2.3.2 Physical Details

ICA-8350 Connector



Interface	Description																					
<b>RJ45 LAN socket</b>	<p>Connects to your local area network by Ethernet cable.</p> <p>LAN LED (green color) This LED will be flashing while network accessing via Ethernet.</p> <p>Power LED (orange color) This LED is used to indicate whether DC power is on or not.</p>																					
<b>DC-in Jack</b>	<p>DC power input, connect to AC power adapter.</p> <div data-bbox="281 403 378 531" style="border: 1px solid black; padding: 5px; display: inline-block;">   <b>Note</b> </div> <p>To ensure maximum compatibility, use only the power adapter that came with your product. Otherwise, the product may be damaged</p>																					
<b>RS-485 &amp; Digital I/O</b>	<p>RS-485: Connect to a local keyboard controller. DI/ DO: Connect to sensor in and alarm out devices. Cable for I/O connectors:</p> <table border="1" data-bbox="281 663 991 930"> <thead> <tr> <th data-bbox="281 663 432 699">Name</th> <th data-bbox="432 663 591 699">Number</th> <th data-bbox="591 663 991 699">Function</th> </tr> </thead> <tbody> <tr> <td data-bbox="281 699 432 738">12VDC</td> <td data-bbox="432 699 591 738">1</td> <td data-bbox="591 699 991 738">DC 12V (50mA maximum)</td> </tr> <tr> <td data-bbox="281 738 432 778">DI</td> <td data-bbox="432 738 591 778">2</td> <td data-bbox="591 738 991 778">Digital signal input</td> </tr> <tr> <td data-bbox="281 778 432 818">GND</td> <td data-bbox="432 778 591 818">3</td> <td data-bbox="591 778 991 818">GND</td> </tr> <tr> <td data-bbox="281 818 432 858">DO</td> <td data-bbox="432 818 591 858">4</td> <td data-bbox="591 818 991 858">Digital signal output</td> </tr> <tr> <td data-bbox="281 858 432 898">485+</td> <td data-bbox="432 858 591 898">5</td> <td data-bbox="591 858 991 898">RS485 data +</td> </tr> <tr> <td data-bbox="281 898 432 930">485-</td> <td data-bbox="432 898 591 930">6</td> <td data-bbox="591 898 991 930">RS485 data -</td> </tr> </tbody> </table>	Name	Number	Function	12VDC	1	DC 12V (50mA maximum)	DI	2	Digital signal input	GND	3	GND	DO	4	Digital signal output	485+	5	RS485 data +	485-	6	RS485 data -
Name	Number	Function																				
12VDC	1	DC 12V (50mA maximum)																				
DI	2	Digital signal input																				
GND	3	GND																				
DO	4	Digital signal output																				
485+	5	RS485 data +																				
485-	6	RS485 data -																				
<b>MIC in (Audio in)</b>	Connect a microphone to the network camera.																					
<b>Audio out</b>	Connect a loud speaker to the network camera. This function is for voice alerting and two-way audio.																					
<b>Video out (BNC connector)</b>	<p>The Network Camera also provides composite video output. The video output function is only for easy installation to check view angle and focus. The output is not a Mega-Pixel resolution. Furthermore, only "720P Mode" supports this function. "2 Mega Mode" does not support it. Please refer to Setting \ Video \ Common chapter.</p>																					

## Reset

This button is used to restore the all factory default settings. Sometimes restarting the device will make the system back to a normal state. However, if the system still got problems after restart, user can restore the factory default settings and install it again.

Restore the device:

1. While the Camera is ready and then press the button down continuously.
2. Hold the button at least 5 seconds and release it. Then the device has been restored to default settings and reboot again.



Note

Restoring the factory default setting will lose the all previous settings included IP address forever. User needs to run the IPWizard II program to search the device and configure it to let the device work properly again.

### 2.3.3 Installation

1. Fix IR camera to desired location with wall mount fixture.

2. Plug-in Ethernet Cable into RJ-45 connector.

Connect an Ethernet cable to the LAN socket located on the Network Camera's back panel and attach it to the network.

3. Connect RS485 D+ and D- (if you need to control PT scanner).

4. Connect the attached power adapters to camera and heater (option/by model) and plug-in these adapters into power outlet.

5. Done.

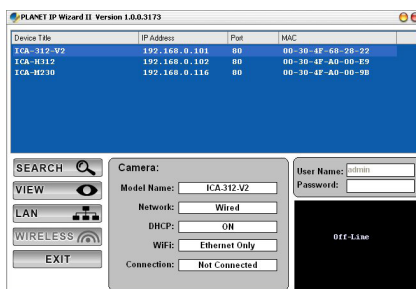
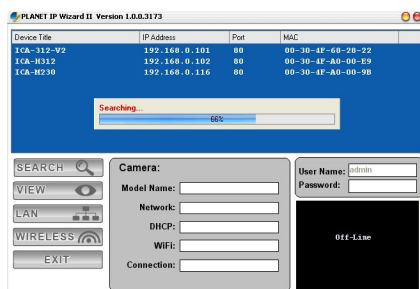
## Chapter 3. Camera Windows Utility

This chapter shows how to quick set up your 3 Mega-Pixel Vari-Focal IR / Fisheye IP Camera. The 3 Mega-Pixel Vari-Focal IR / Fisheye IP Camera is with the default settings. However to help you find the networked camera quickly the windows utility (PLANET IPWizard II) can search the IP cameras in the network that shall help you to configure some basic setting before you started advanced management and monitoring.

Please insert the bundle CD disk into your CD/DVD-ROM drive. When the welcome web page appears, please click your IP camera name on the IP camera list. Then click the PLANET IPWizard II hyperlink to start the PLANET IPWizard II.

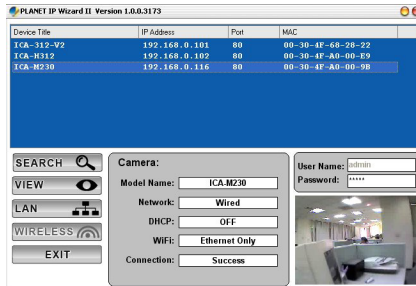
**Search** function:

Press **“Search”** button. PLANET IPWizard II will list all networked devices in the LAN. If the IP camera doesn't be found, you may check this IP camera is connect to network properly and press the search button again.



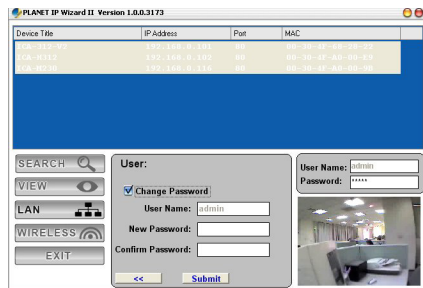
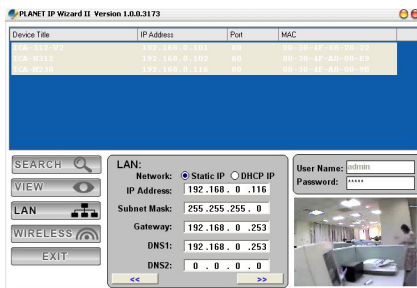
## View function:

If PLANET IPWizard II finds network devices, View button will be available. Please select the device you want to view and click the View button. Furthermore you could double click the left button of mouse to link to the network device by browser.



## LAN setting:

The utility featured with "LAN" setting function to help user to modify the IP parameters of the installed network devices. User can step by step to setup IP address, username and password.



## Note

1. If no IP address is assigned within 30 seconds, the networked device will automatically assign 192.168.0.20. User may now open your web browser, and key in **http://192.168.0.20** in the address bar of your web browser to logon IP Camera's web configuration page.
2. Power Line Frequency
  - If you found the video image is flash, you may need to choose 50 or 60 Hz frequency (depends on different country).
  - World wide power line frequency table is inside user's manual, Appendix.

After connected to networked device, the device will prompt for User name and Password. For the first time, please enter: **admin/admin** as username and password to continue Web Management.



Default User Name: **admin**

Default Password: **admin**

Default IP: **192.168.0.20** – if no DHCP existed in the network

If difficulty is met, please refer to the following steps to establish the connection:

- The networked device must be installed and powered ON.

If the networked device's default IP Address (**192.168.0.20**) is already used by another device, the other device must be turned OFF until the device is allocated a new IP Address during configuration.

---

## ***Further Information***

This guide is used to help you startup your IP Camera settings. It is also recommended to check the user manual in CD disk for more details of the system and user configuration.