

Quick Installation Guide

WDRT-731U

300Mbps Dual-Band 802.11n
Wireless Gigabit Router



1. Package Contents

Thank you for choosing PLANET WDRT-731U. Before installing the router, please verify the contents inside the package box.

Wireless Router



Quick Guide



CD-ROM



12V/1A Power Adapter

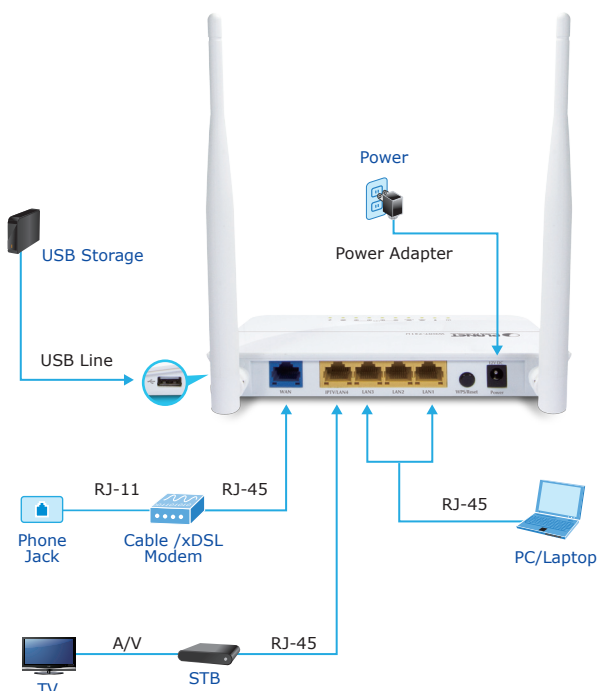


Ethernet Cable



- 1 -

STEP 2: Follow the figure below to connect the network devices. It depends on your network environment to connect the WAN port to a Cable/xDSL modem, or the Ethernet directly in your place.



- 3 -

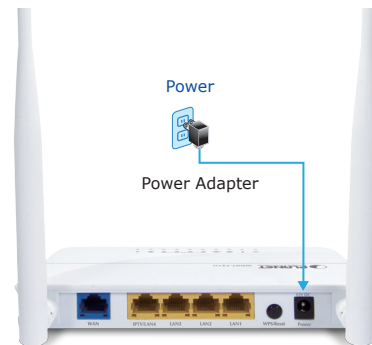


Note

If there is any item missed or damaged, please contact the seller immediately.

2. Hardware Installation

STEP 1: Connect the Power Adapter provided in the package to the WDRT-731U. The Power LED on the front panel shall turn on accordingly.



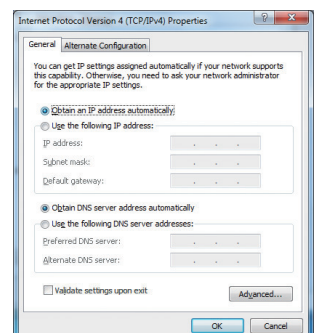
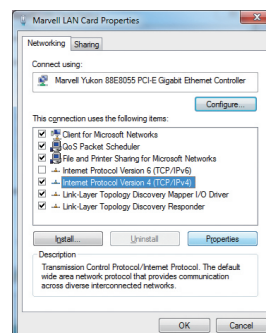
- 2 -

3. Network Configuration (Windows 7)

A computer with a wired Ethernet connection is required for the first-time configuration of the Wireless Router.

Set your computer to get an IP address from the Wireless Router:

1. Click **"Start"** button located at lower-left corner of the screen.
2. Click **"Control Panel"**.
3. Double click **"Network and Sharing Center"** icon.
4. Click **"Change adapter settings"**.
5. Double click **"Local Area Connection"** icon.
6. Select **"Internet Protocol Version 4 (TCP/IPv4)"** and click **"Properties"** button.
7. Select **"Obtain an IP address automatically"** and **"Obtain DNS server address automatically"**, then click **"OK"** button twice to save the configuration.



- 4 -

4. Enter into the Web Management

Default IP Address: **192.168.1.1**

Default User name: **admin**

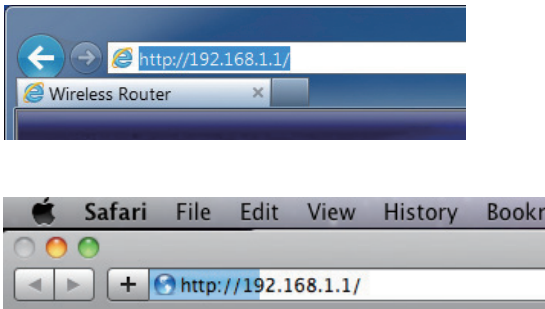
Default Password: **admin**

Default SSID of 2.4G: **default_2.4G**

Default SSID of 5G: **default_5G**

Default Wireless Encryption Type: **None**

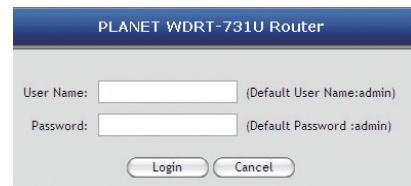
STEP 1: The Web management allows you to access and manage the WDRT-731U easily. Launch the Web browser and enter the default IP address **http://192.168.1.1**



- 5 -

STEP 2: When you enter into the Web User Interface, please enter the User Name and Password in the login window. The default User name and Password are both **"admin"**.

Then click **"Login"** button to continue.



STEP 3: Once the corresponding Internet connection type is chosen, click **OK** button to save and make the changes take effect.



- 6 -

5. Wireless Network Connection

STEP 1: Right-Click on the **network icon** displayed in the system tray.



STEP 2: Highlight the wireless network (SSID) you want to connect and click **Connect button**.

STEP 3: Enter the **encryption key** of WDRT-731U if necessary.



You have already finished the configuration of the WDRT-731U. Now you can use your iPhone, iPad, laptop, and any other Wi-Fi devices to connect with it wirelessly and start surfing the Internet.

FURTHER INFORMATION:

The above steps introduce simple installations and configurations for WDRT-731U. For further configurations of Wireless Dual Band, WAN, LAN, Firewall, Virtual Server, DMZ, and DDNS etc, please refer to the user manual in the CD-ROM. If you have further questions, please contact the local dealer or distributor where you purchased this product.

- 7 -

FCC Statement

This device complies with Part 15 of the FCC Rules. Operation is subject to the following two conditions: (1) This device may not cause harmful interference, and (2) this device must accept any interference received, including interference that may cause undesired operation.

This equipment has been tested and found to comply with the limits for a Class B digital device, pursuant to Part 15 of the FCC Rules. These limits are designed to provide reasonable protection against harmful interference in a residential installation. This equipment generates, uses and can radiate radio frequency energy and, if not installed and used in accordance with the instructions, may cause harmful interference to radio communications. However, there is no guarantee that interference will not occur in a particular installation. If this equipment does cause harmful interference to radio or television reception, which can be determined by turning the equipment off and on, the user is encouraged to try to correct the interference by one of the following measures:

- Reorient or relocate the receiving antenna.
- Increase the separation between the equipment and receiver.
- Connect the equipment into an outlet on a circuit different from that to which the receiver is connected.
- Consult the dealer or an experienced radio/TV technician for help.

FCC Caution: Any changes or modifications not expressly approved by the party responsible for compliance could void the user's authority to operate this equipment.

This transmitter must not be co-located or operating in conjunction with any other antenna or transmitter.

Radiation Exposure Statement

This equipment complies with FCC radiation exposure limits set forth for an uncontrolled environment. This equipment should be installed and operated with minimum distance 20cm between the radiator & your body.



1. The manufacturer is not responsible for any radio or TV interference caused by unauthorized modifications to this equipment.
2. To avoid unnecessary radiation interference, it is recommended to use a shielded RJ45 cable.

CE Mark Warning

This is a Class B product in a domestic environment, this product may cause radio interference, in which case the user may be required to take adequate measures.



1. The manufacturer is not responsible for any radio or TV interference caused by unauthorized modifications to this equipment.
2. To avoid unnecessary radiation interference, it is recommended to use a shielded RJ45 cable.

"The product can be used without restrictions in the following countries: all EU member states except France and Norway.

The product can be used with limitations in the following countries: France (for indoor use only) and Norway (20 km in the center of Ny-Llesund)."

2011-E50280-001



- 8 -