

**Industrial 8 100/1000X SFP + 2-Port 10/100/1000T
Managed Switch (-40~75 Degree C)**

IGS-10080MFT

Quick Installation Guide

Table of Contents

1. Package Content.....	3
2. Requirements	4
3. Wiring the Power Inputs.....	5
4. Terminal Setup	6
5. Logon to the Console.....	7
6. Configure IP address.....	8
■ Show the current IP address.....	8
■ Configure IP address	9
7. Start Web Management.....	10
■ Login the Industrial Managed Switch.....	11
8. Reset the Switch to Default	13
Customer Support.....	14

1. Package Content

Thank you for purchasing PLANET Layer 2 Industrial Managed Switch, IGS-10080MFT. Terms of “**Industrial Managed Switch**” means the Switch mentioned titled in the cover page of this Quick installation guide, i.e. IGS-10080MFT.

Open the box of the **Industrial Managed Switch** and carefully unpack it. The box should contain the following items:

- The Industrial Managed Switch x 1
- Quick Installation Guide x 1
- User’s Manual CD x 1
- DIN Rail Kit x 1
- Wall Mounting Kit x 1
- DB9 to RJ45 Interface RS232 Console Cable x 1
- Dust Cap x 11

If any of these are missing or damaged, please contact your dealer immediately, if possible, retain the carton including the original packing material, and use them against to repack the product in case there is a need to return it to us for repair.

2. Requirements

The Industrial Managed Switch provide remote login interface for manage; the following equipments are necessary for further management.

- **Workstation** installed with Ethernet NIC (Network Card)
- Workstations of subscribers running Windows XP/2003, Vista, Windows 7, MAC OS X, Linux, Fedora, Ubuntu or other platform compatible with TCP/IP protocols.
- **Ethernet Port connect**
 - Network cables - Use standard network (UTP) cables with RJ-45 connectors.
 - Above Workstation installed with WEB Browser and JAVA runtime environment Plug-in



Note

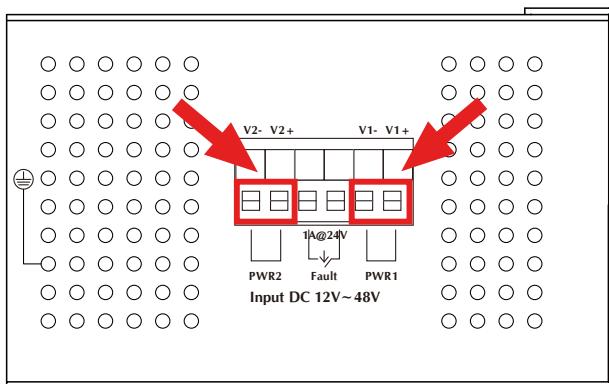
It is recommended to use Internet Explorer 7.0 or above to access the Industrial Managed Switch.

3. Wiring the Power Inputs

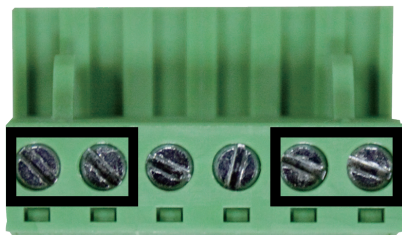
The Upper Panel of the **Industrial Managed Switch** indicates a DC inlet power socket and consist one terminal block connector within 6-contacts. It accepts input power from 12 to 48V DC or AC 24V. Please follow the steps below to insert the power wire.

1. Insert positive / negative DC power wires into the contacts 1 and 2 for POWER 1, or 5 and 6 for POWER 2.

IGS-10080MFT Upper Panel



2. Tighten the wire-clamp screws for preventing the wires from losing.



1	2	3	4	5	6
Power 1				Power 2	
+	-			+	-

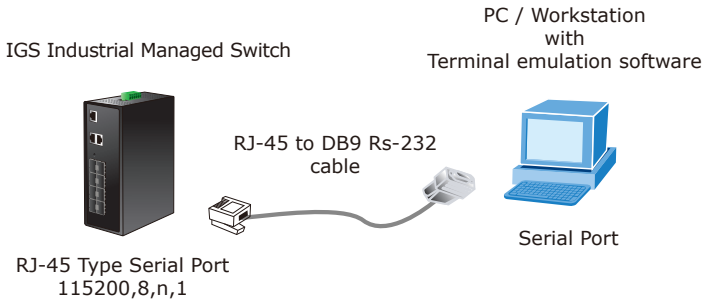


Note

The wire gauge for the terminal block should be in the range between 12 ~ 24 AWG.

4. Terminal Setup

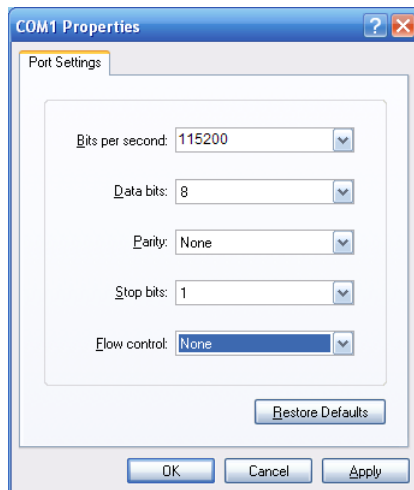
To configure the system, connect a serial cable to a **COM port** on a PC or notebook computer and to RJ-45 type serial (console) port of the Managed Industrial Switch. The console port of the Managed Industrial Switch is DCE already, so that you can connect the console port directly through PC without the need of Null Modem.



A terminal program is required to make the software connection to the ISW Managed Industrial Switch. Windows' **Hyper Terminal** program may be a good choice. The Hyper Terminal can be accessed from the **Start** menu.

1. Click **START**, then **Programs, Accessories** and then **Hyper Terminal**.
2. When the following screen appears, make sure that the COM port should be configured as:

- ◆ Baud : 115200
- ◆ Parity : None
- ◆ Data bits : 8
- ◆ Stop bits : 1
- ◆ Flow Control : None



5. Logon to the Console

Once the terminal has connected to the device, power on the IGS-10080MFT Managed Industrial Switch, the terminal will display that it is running testing procedures.

Then, the following message asks the login user name and password. The factory default user name and password as following and the login screen in Figure 4-1 appears.

User name: **admin**

Password: **admin**

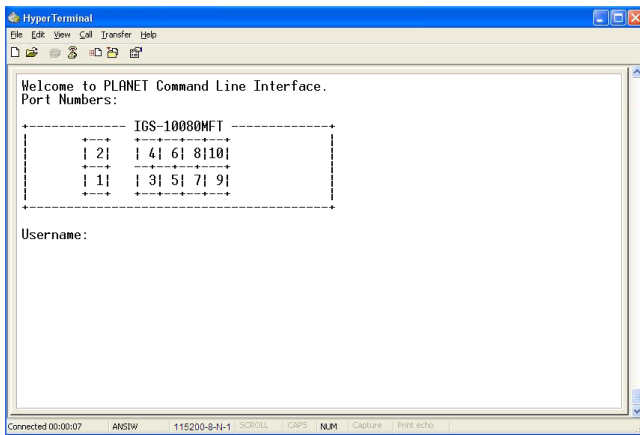


Figure 4-1 IGS-10080MFT Console Login screen



Note

1. For security reason, please change and memorize the new password after this first setup.
2. Only accept command in lowercase letter under console interface.

6. Configure IP address

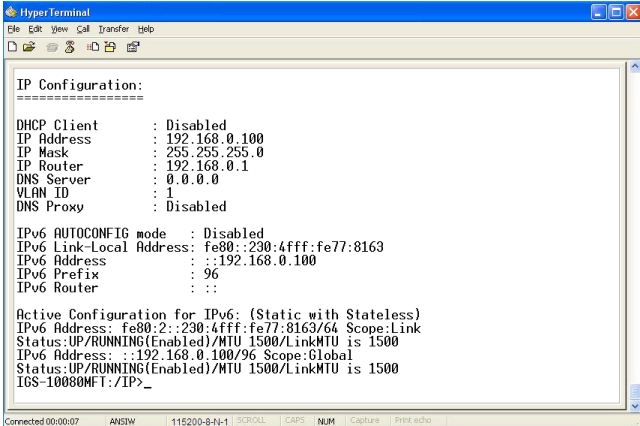
The IGS-10080MFT Managed Industrial Switch is shipped with default IP address as following.

IP Address: **192.168.0.100**
Subnet Mask: **255.255.255.0**

To check the current IP address or modify a new IP address for the Managed Industrial Switch, please use the procedures as follow:

■ Show the current IP address

1. On "IGS-10080MFT>" prompt, enter "ip" to enter IP configuration mode.
2. On "IGS-10080MFT :/IP>" prompt, enter "configuration".
3. The screen displays the current IP address, Subnet Mask and Gateway. As show in Figure 5-1.



```
HyperTerminal
File Edit View Call Transfer Help
IP Configuration:
=====
DHCP Client      : Disabled
IP Address      : 192.168.0.100
IP Mask         : 255.255.255.0
IP Router       : 192.168.0.1
DNS Server      : 0.0.0.0
VLAN ID        : 1
DNS Proxy       : Disabled

IPv6 AUTOCONFIG mode : Disabled
IPv6 Link-Local Address: fe80::230:4fff:fe77:8163
IPv6 Address      : ::192.168.0.100
IPv6 Prefix       : 96
IPv6 Router       : ::

Active Configuration for IPv6: (Static with Stateless)
IPv6 Address: fe80::230:4fff:fe77:8163/64 Scope:Link
Status:UP/RUNNING(Enabled)/MTU 1500/LinkMTU is 1500
IPv6 Address: ::192.168.0.100/96 Scope:Global
Status:UP/RUNNING(Enabled)/MTU 1500/LinkMTU is 1500
IGS-10080MFT:/IP>
```

Figure 6-1 Show IP information screen

■ Configure IP address

4. On "IGS-10080MFT:/IP>" prompt, enter the following command and press <Enter>. As show in Figure 5-2.

```
IGS-10080MFT:/IP>setup 192.168.1.100 255.255.255.0 192.168.1.1 1
```

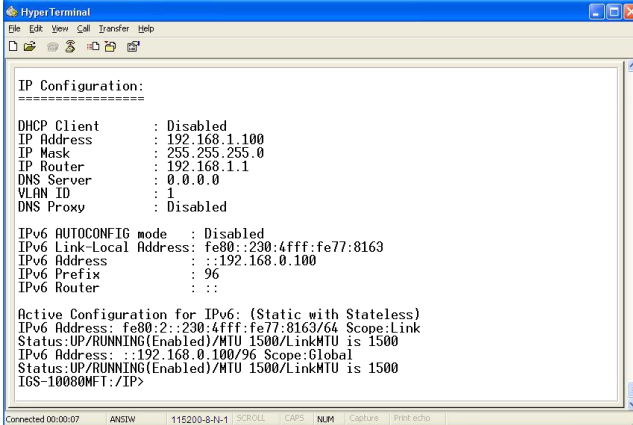
The previous command would apply the follow settings for the Switch.

IP: 192.168.1.100

Subnet Mask: 255.255.255.0

Gateway: 192.168.1.1

VLAN ID: 1



```
Hyperterminal
File Edit View Call Transfer Help
IP Configuration:
=====
DHCP Client      : Disabled
IP Address       : 192.168.1.100
IP Mask          : 255.255.255.0
IP Router        : 192.168.1.1
DNS Server       : 0.0.0.0
VLAN ID          : 1
DNS Proxy        : Disabled

IPv6 AUTOCONFIG mode : Disabled
IPv6 Link-Local Address: fe80::230:4fff:fe77:8163
IPv6 Address       : ::192.168.0.100
IPv6 Prefix        : 96
IPv6 Router        : ::

Active Configuration for IPv6: (Static with Stateless)
IPv6 Address: fe80::230:4fff:fe77:8163/64 Scope:Link
Status:UP/RUNNING(Enabled)/MTU 1500/LinkMTU is 1500
IPv6 Address: ::192.168.0.100/96 Scope:Global
Status:UP/RUNNING(Enabled)/MTU 1500/LinkMTU is 1500
IGS-10080MFT:/IP>
```

Figure 6-2 Set IP address screen

5. Repeat Step 1 to check if the IP address is changed.

If the IP is successfully configured, the Managed Industrial Switch will apply the new IP address setting immediately. You can access the Web interface of ISW Managed Industrial Switch through the new IP address.



Note

If you do not familiar with console command or the related parameter, enter "?" anytime in console to get the help description.

7. Start Web Management

The following shows how to start up the **Web Management** of the Industrial Managed Switch. Note the Industrial Managed Switch is configured through an Ethernet connection, please make sure the manager PC must be set on the same **IP subnet address**.

For example, the default IP address of the Industrial Managed Switch is **192.168.0.100**, then the manager PC should be set at **192.168.0.x** (where x is a number between 1 and 254, except 100), and the default subnet mask is 255.255.255.0.

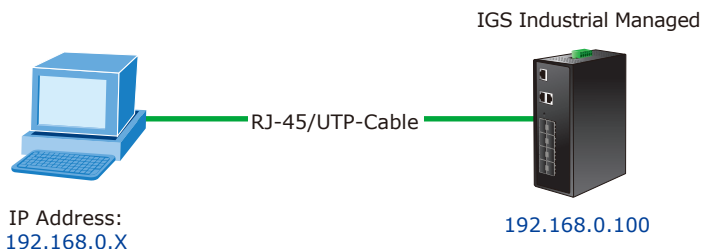


Figure 7-1 IP Management Diagram

■ Login the Industrial Managed Switch

1. Use Internet Explorer 7.0 or above Web browser, enter IP address **http://192.168.0.100** (the factory-default IP address) to access the Web interface.
2. When the following dialog box appears, please enter the default user name **"admin"** and password **"admin"** (or the password you have changed before). The login screen in Figure 4-2 appears.

Default IP Address: **192.168.0.100**

Default User Name: **admin**

Default Password: **admin**

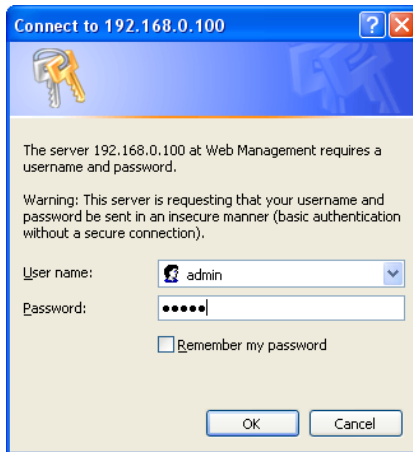


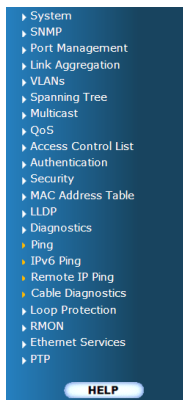
Figure 7-2 Login Screen

3. After entering the password, the main screen appears as Figure 4-3.



Figure 7-3 Web Main Screen of Industrial Managed Switch

The Switch Menu on the left of the Web page let you access all the functions and status the Industrial Managed Switch provides.



Now, you can use the Web management interface to continue the Switch management. Please refer to the user manual for more.

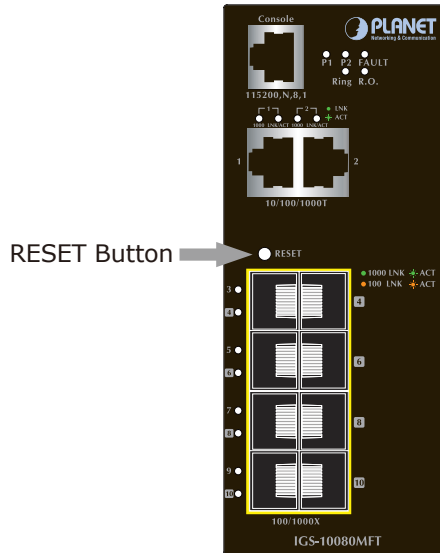


Note

For security reason, please change and memorize the new password after this first setup.

8. Reset the Switch to Default

To reset the IP address to the default IP Address **“192.168.0.100”** and the user password to factory default mode (default password is admin). Press the hardware reset button at the front panel about 5 seconds. After the device is rebooted, you can login the management Web interface within the same subnet of 192.168.0.xx and default password. Be noted, all the previous setup will disappeared after factory reset.



Customer Support

Thank you for purchase PLANET products. You can browse our online FAQ resource at the PLANET web site first to check if it could solve you issue. If you need more support information, please contact PLANET switch support team.

PLANET online FAQ :

<http://www.planet.com.tw/en/support/faq.php>

Switch support team mail address :

support_switch@planet.com.tw

Copyright © PLANET Technology Corp. 2013.

Contents subject is to revision without prior notice.

PLANET is a registered trademark of PLANET Technology Corp.

All other trademarks belong to their respective owners.

This page is intentionally left blank

This page is intentionally left blank