

Vandalproof IR IP Camera

ICA-5250V / ICA-5260V / ICA-5550V

Quick Installation Guide

Table of Contents

Chapter 1. Introduction	3
1.1 Before Installation	3
1.2 System Requirements	3
Chapter 2. Physical Description and Installation	4
2.1 Package Contents	4
2.2 Physical Details	4
2.3 I/O Control Instruction	5
2.3.1 I/O Connection	6
2.3.2 I/O PIN definition	6
2.4 Factory Default	6
Chapter 3. Camera Windows Utility	8
3.1 IP Assignment	8
Further Information	12

Chapter 1. Introduction

Thank you for purchasing PLANET Vandalproof IR IP camera. It is versatile and high image solution of surveillance application for day and night. PLANET IP Camera supports Multi-Profile function for simultaneous video streams. These Network Cameras can generate H.264, MPEG-4 and M-JPEG streaming simultaneously to different clients. Moreover, the resolution can be different from one client to another. This state-of-art design is considerable to fit in various network environments.

This installation guide provides instructions for installing the following network cameras:

- ICA-5250V – **Full HD Vandalproof IR IP Camera**
- ICA-5260V – **60fps Full HD Vandalproof IR IP Camera**
- ICA-5550V – **5 Mega-pixel Vandalproof IR IP Camera**

1.1 Before Installation

Before installation, please be sure to read this quick installation guide and user's manual (CD) carefully to complete machine installation. This guide shows how to quickly set up the IP camera.

1.2 System Requirements

CPU	Intel Core i3-530
RAM	2048MB
Graphic Card	512MB
Display Resolution	1920 x 1200
Operating System	Windows 2000, XP, 2003, Vista 32bit, Win7 32bit
Network	Ethernet 10/100Base-TX

Chapter 2. Physical Description and Installation

2.1 Package Contents

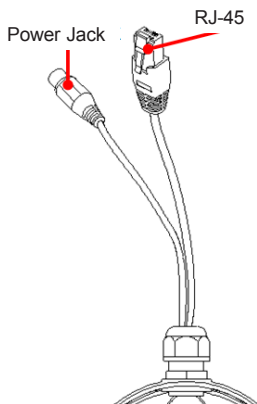
- Camera Unit x 1
- Power Adapter x 1
- Accessories Kit x 1
- Female to Female RJ45 Connector x 1
- Mounting Label x 1
- User's Manual CD-ROM x 1
- Quick Installation Guide x 1
- Desiccant x 1

2.2 Physical Details

1. **RJ-45 LAN Socket:** Connect to PC or Hub/Switch.

When connecting to 10Base-T Ethernet or 100Base-TX Fast Ethernet cable, this Ethernet port built N-Way protocol can detect or negotiate the transmission speed of the network automatically. Please use CAT-5 cable to connect the Network Camera to a 100Mbps Fast Ethernet network switch or hub.

2. **Power Jack:** The input power is 12V DC.



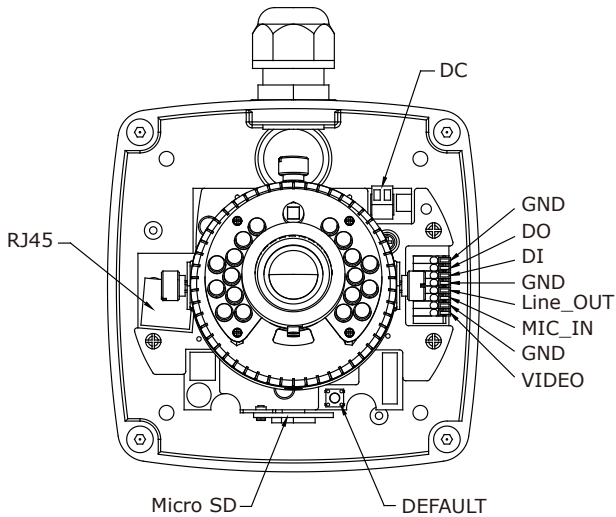


Note

1. To ensure maximum compatibility, use only the power adapter that came with your product. Otherwise, the product may be damaged.
2. The RJ45 port also supports IEEE 802.3af Power over Ethernet. Apply either PoE or DC power to empower the IP camera and do not use any other non-standard PoE injector to the camera.

2.3 I/O Control Instruction

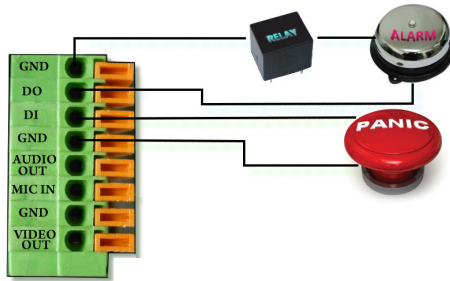
I/O terminal connector is used for such functions as motion detection, and event triggering.



2.3.1 I/O Connection

Please connect the GND & DO pin to the external relay (buzzer) device.

Please connect the GND & DI pin to the external trigger device.



2.3.2 I/O PIN definition

- GND (Ground): Initial status is Low
- DO (Digital Output): 5V DC
- DI (Digital Input): Max. 50mA, 5V DC

2.4 Factory Default

If you forget your password, please follow the steps to revert back to default value.

1. Remove the power and Ethernet cable. Press and hold the button as shown in the picture below.

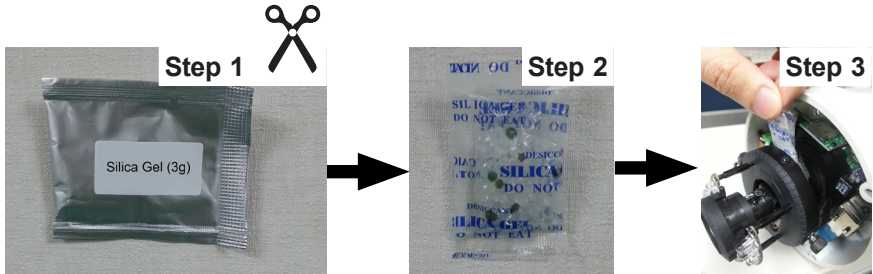


2. Connect power to the camera again, and do not release the button during the system booting.
3. It will take around 30 seconds to boot the camera.
4. Release the button when camera finishes process.
5. Plug in the Ethernet cable, and re-login the camera using the default IP (<http://192.168.0.20>), and user name (admin) and password (admin).



Note

If the dome housing is opened during installation, open the package containing the silica gel and place it inside the dome for avoiding humidity.



Chapter 3. Camera Windows Utility

This chapter shows how to quickly set up your PLANET IP Camera. PLANET IP Camera is with the default settings. However, to help you find the networked camera quickly, the windows utility (PLANET IP Installer) can search the cameras in the network that will help you to configure some basic setting before you start advanced management and monitoring.

Please insert the bundled CD disk into your CD/DVD-ROM drive. When the welcome web page appears, please click your IP camera name on the IP camera list. Then click the PLANET IPInstaller hyperlink to start the PLANET IP Installer.

3.1 IP Assignment

1. Use "IP Installer II" to assign an IP address of IP CAMERA.

The IP Installer software is in the attached CD.

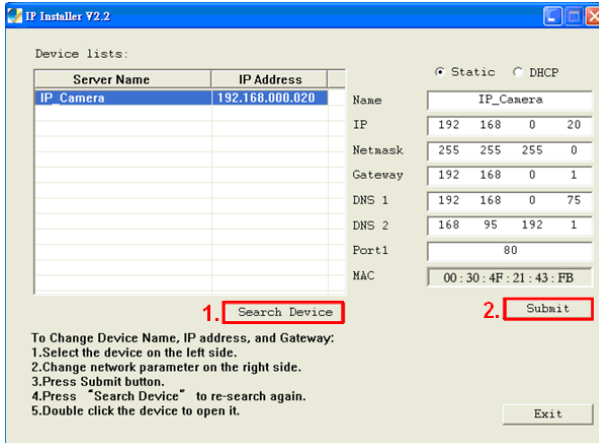
2. IP Installer supports languages.

IPInstallerEng.exe

3. OS: Windows XP SP2 or above. If the following "Windows Security Alert" pops out, please click "Unblock".



4. The GUI of IP Installer is as follows (Default IP: 192.168.0.20).



- IP Installer will search all IP Cameras connected on LAN. The user can click "Search Device" to search again.
- Click one of IP Cameras listed on the left side of IP Installer, then the network configuration of that IP Camera will be listed on the right side. If parameters change, click on "Submit". Then, the network configuration will be changed. Just click "OK" to reboot.



Please make sure the subnet of PC IP address and IP CAM IP address are the same.

For Example:

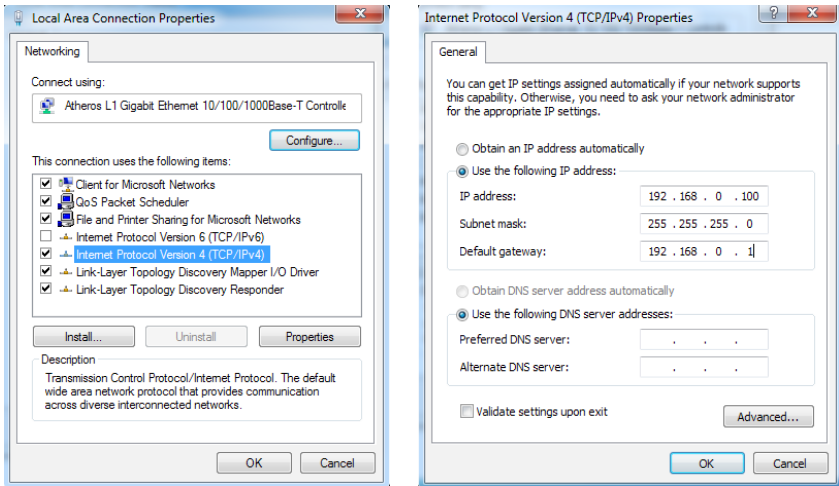
IP CAM IP address: 192.168.0.20

PC IP address: 192.168.0.100

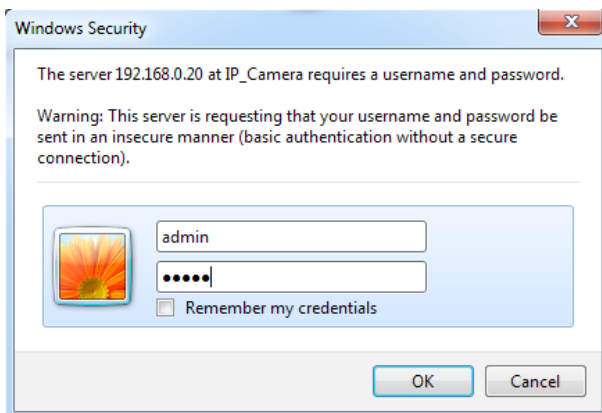
To Change PC IP addresses:

Control Panel → Network Connections → Local Area Connection Properties → Internet Protocol (TCP/IP) → Properties

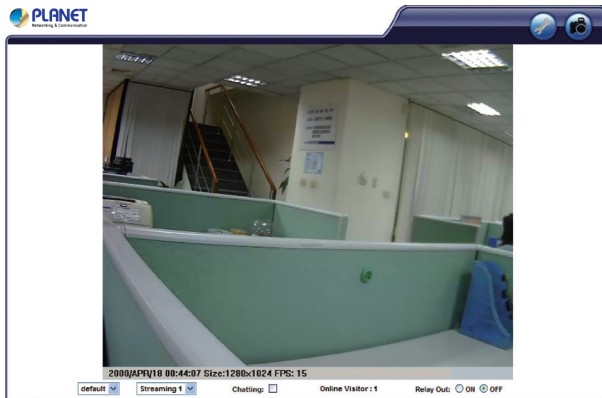
Please make sure your IP Camera and PC have the same subnet. If not, please change IP Camera IP subnet or PC IP subnet accordingly.



- A quick way to access remote monitoring is to left-click the mouse twice on a selected IP Camera listed on "Device list" of IP Installer. An IE browser will be opened.
- Then, please key in the default User name: **"admin"** and Password: **"admin"** in the following message box.



- If the user name and password are input correctly, the following web page will be displayed.



Further Information

This guide is used to help you start-up your IP Camera settings. It is also recommended to check the user manual in CD disk for more details of the system and user configuration.