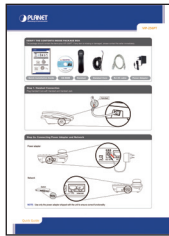


VERIFY THE CONTENTS INSIDE PACKAGE BOX

The package should contain the items plus VIP-256 Series. If any item is missing or damaged, please contact the seller immediately.



Quick Installation Guide



CD-ROM



Handset



Handset Cord



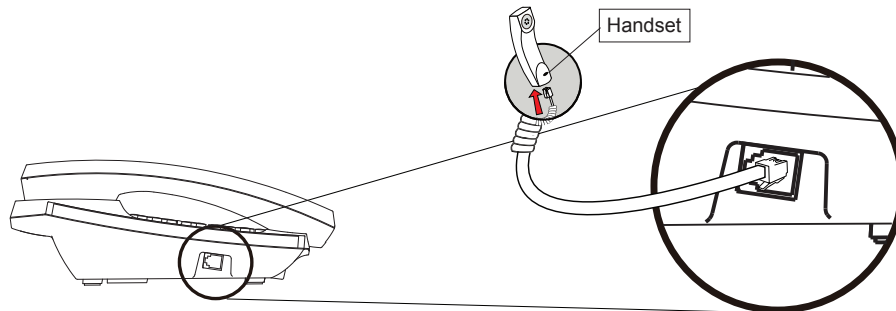
RJ-45 cable



Power Adapter

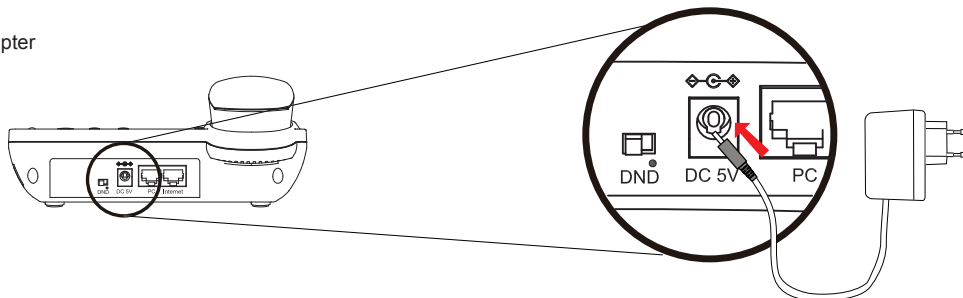
Step 1. Handset Connection

Plug Handset Cord with Handset and Handset Jack

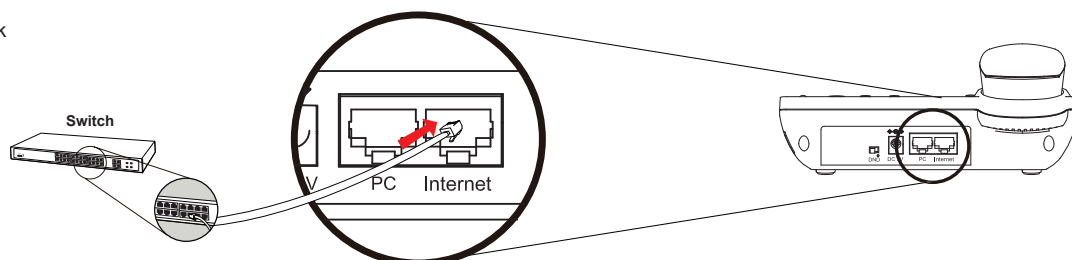


Step 2a. Connecting Power Adapter and Network

Power adapter



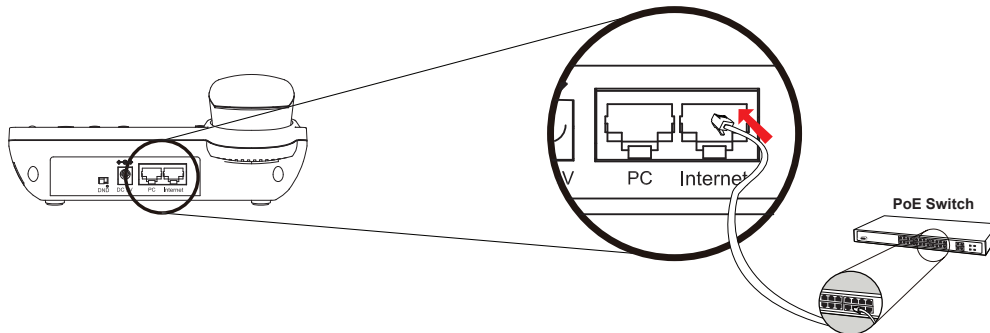
Network



NOTE : Use only the power adapter shipped with the unit to ensure correct functionality

Step 2b. Connecting Power via PoE interface and Network (VIP-256PT only)

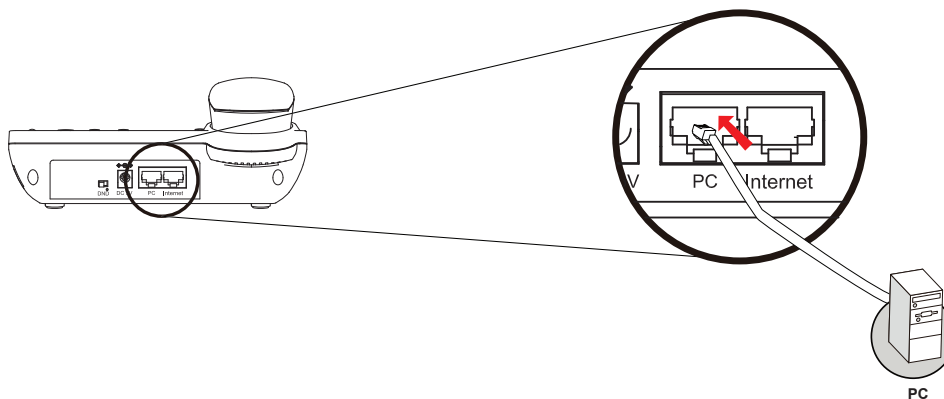
In the VIP-256PT can be powered without external AC power adapter, if connecting to an IEEE802.3af PSE devices such as 802.3af POE injector/hub or 802.3af POE Switch.



NOTE : Only Internet port of the VIP-256PT support 802.3af power injection, use of any non-standard POE injector could damage the device.

Step 3. Computer Network Setup

Set your computer's IP address to 192.168.0.x, where x is a number between 2 to 254 (except 1 where is being used for the IP Phone by default). If you don't know how to do this, please ask your network administrator.



Step 4. Login Prompt

Use web browser (Internet Explorer 6.0 or above) to connect to 192.168.0.1 (type this address in the address bar of web browser). You'll be prompted to input user name and password: **admin / 123**

Further Configuration

For detail configuration, please check user's manual on the bundled CD.

If you have any other questions, please contact the dealer where you purchased this product or you can contact PLANET directly at the following email address: support_vip@planet.com.tw