

1. Package Contents

Thank you for purchasing PLANET 24-Port VDSL / ADSL2+ IP DSLAM, XDL-2420R. "**IP DSLAM**" mentioned in this quick guide refers to the XDL-2420R.

Open the box of the IP DSLAM and carefully unpack it. The box should contain the following items:

- ◆ The XDL-2420R IP DSLAM x 1
- ◆ Quick Installation Guide x 1
- ◆ Telco50 Cable x 2
- ◆ Two Rack-mounting Brackets with Attachment Screws x 1
- ◆ Power Cord x 1

If any item is found missing or damaged, please contact your local reseller for replacement.

- 1 -

3. Starting Web Management

The following shows how to start up the **Web Management** of the IP DSLAM. Note the IP DSLAM is configured through an Ethernet connection. Please make sure the manager PC must be set on the same **IP subnet address** and connects manager PC to **EMS port** of XDL-2420R.

For example, the default IP address of the IP DSLAM is **192.168.0.100**, then the manager PC should be set at **192.168.0.x** (where x is a number between 1 and 254, except 100), and the default subnet mask is 255.255.255.0.



Figure 3-1: IP Management Diagram

- 3 -

2. Requirements

- Workstations running Windows 7/8/2008, MAC OS X or later, Linux or other platforms are compatible with TCP/IP protocols.
- Workstations are installed with Ethernet NIC (Network Interface Card)
- **Ethernet Port Connection**
 - Network cables -- Use standard network (UTP) cables with RJ45 connectors.
 - The above PC is installed with Web browser and JAVA runtime environment plug-in.



It is recommended to use Internet Explorer 9.0 above or Firefox Web browser to access the IP DSLAM.

- 2 -

Logging in the IP DSLAM

1. Use Internet Explorer or FireFox Web browser and enter IP address **http://192.168.0.100** to access the Web interface.
2. When the following dialog box appears, please enter "**admin**" for both the default user name and password. The login screen in Figure 3-2 appears.

Default Username: **admin**
Default Password: **admin**

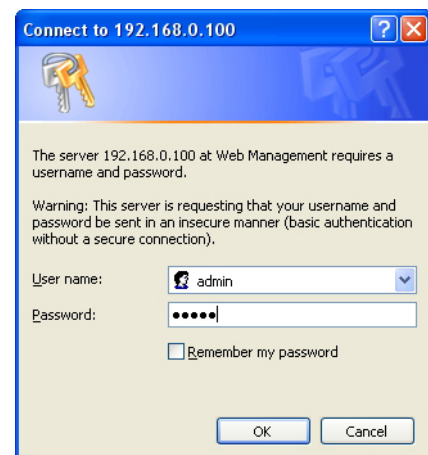


Figure 3-2: Login Screen

- 4 -

Broadband Communication

XDL-2420R

www.PLANET.com.tw

24-Port VDSL2/ADSL2+ IP DSLAM



PLANET Technology Corp.

2011-AC0380-000



3. After entering the password, the main screen appears as Figure 3-3 shows.



Figure 3-3: Web Main Screen of IP DSLAM

Now, you can use the Web management interface to continue the IP DSLAM management.

Please refer to the user's manual for more.

4. Customer Support

Thank you for purchasing PLANET products. You can browse our online FAQ resource and User's Manual on PLANET Web site first to check if it could solve your issue. If you need more support information, please contact PLANET switch support team.

PLANET online FAQ:

<http://www.planet.com.tw/en/support/faq.php?type=1>

Switch support team mail address:

support_switch@planet.com.tw

XDL-2420R User's Manual:

<http://www.planet.com.tw/en/support/download.php?type1=320&model=48618&type=3>



Copyright © PLANET Technology Corp. 2014.

Contents are subject to revision without prior notice.

PLANET is a registered trademark of PLANET Technology Corp. All other trademarks belong to their respective owners.